

brnccolor

Light for life





broncolor



Dear Reader

We are pleased to present our complete and up-to-date range of products for the professional imaging market. Our company was founded in 1958 and has steadily contributed to the development of flash and continuous lighting solutions with innovative products.

All our devices are developed and produced at our Swiss headquarters, where we not only carry out the final assembly, but also the complete production of our electronic circuits in SMD or conventional technology.

Each device is also subjected to advanced reliability tests, enabling us to offer a very high level of quality

that guarantees our customers long-term use and investment. We also attach great importance to compatibility between products and accessories, offering infinite extension possibilities.

Our main markets are commercial photography, online businesses and cultural heritage institutes and companies, but we also offer ideal lighting solutions for many other image sectors.

We maintain close contact with users through our exclusive distribution network and can offer not only tools that meet the needs of

photographers and videographers, but also top-level advice and technical support worldwide. We also recommend our website www.broncolor.swiss with detailed information on the entire broncolor product range, as well as numerous tutorials.

We hope you will find the ideal lighting solutions and accessories to help you create different, surprising and refined images. We will be happy if needed to advise you.

broncolor - innovative, high-quality lighting solutions with a high degree of reliability.

Jacques Bron



TABLE OF CONTENTS

Company Portrait	6
Technical Concepts	8
broncolor Technologies	11
The broncolor system	
Power Packs	16
Satos	18
Scoro	22
Monolights	24
Stelos	24
Stelos Kits	30
Siros	32
Siros Kits	36
Lamps	38
Picolite Small Lamp	40
Continuous Light	44
Para	46
Para Attachments	48
Reflectors and Attachments	50
Softboxes, Octaboxes and Speedrings	52
Special Reflectors	55
Special Effect Lamps	56
Remote Control	58
Stands	59
Flash Tubes, Modelling Lamps and Protecting Glasses	60
Various Bags and Cables	62
Surface Visualiser	64
Ambassadors	66
Never stop learning	68
Useful Information	70
Help and Downloads	71
Lighting solutions	72
Rental Service	73

Creativity is Compelling

There is one common success factor for the perfect picture, regardless of whether it's a commercial shot, a product listing on an e-commerce platform, a reproduction of artwork, or the documentation of evidence at a crime scene: light. This factor drives our mission to accompany developments in photography and to advance technological progress in professional lighting. Today, broncolor stands as a leading global brand for flash lighting systems, with our products being used in the most prestigious studios as well as in the largest image factories worldwide. Precision, benchmark technology, quality, process integration, and reliability are the driving forces behind this success story.

Our headquarters, along with the technology centre, are located near Basel, Switzerland, close to the meeting point of the German, French, and Swiss borders. In this globally recognized research triangle, committed broncolor employees forge the future. broncolor is a truly Swiss brand with an international network in over 60 countries. Our local representatives and service centres serve as qualified partners for our valued customers all around the world.

The Power of Innovation

It's the innovation hub where pioneering broncolor technologies were born and continue to evolve. Our relentless pursuit of optimisation is fuelled by our active engagement at the forefront of electronics engineering, coupled with our exploration of new materials and manufacturing processes. We place great value on ongoing dialogues with professional photographers, broncolor equipment users, as well as collaborations with esteemed universities. These exchanges often inspire the development of new equipment generations, ensuring a seamless evolution that caters to real user needs. However, the best technical features mean little if they lack user-friendly operation. That's why broncolor also prioritizes design. Our products are not only ergonomic and easy to comprehend but also aesthetically pleasing. As visual perception is fundamental to photographers, they particularly value these attributes.

Quality Matters

Picture this: a bustling studio filled with models, make-up artists, hair stylists, assistants, creative directors, and the client - all ready for a productive day. Everything is meticulously prepared, all set to go. But then, right at the crucial moment, the technology fails. It's a nightmare scenario for the client, the agency, and especially the photographer.

Beyond mere fascination and technical advancement, what truly motivates us is ensuring that every broncolor product adheres to the highest standards of quality, precision, and reliability. These standards are defined by the expectations of photographers like you. Prior to delivery, each power pack, every monolight, and every lamp undergoes rigorous testing to ensure seamless functionality and impeccable quality. Backed by our comprehensive two-year factory warranty, we unequivocally stand behind our craftsmanship. This commitment to excellence is recognized and respected worldwide.



Our Commitment to Quality Lighting Solutions

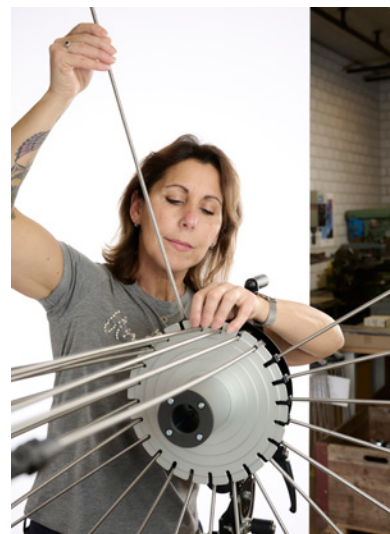
broncolor products have become synonymous with exceptional quality, earning the trust of the world's most professionally managed studios. We take pride in providing unparalleled customer support before and after the purchase. Every broncolor partner has the expertise to assist photographers in achieving the perfect lighting setup. Our global network of authorized service centres ensures access to repair services with original spare parts for extended periods, even after a product has been discontinued for many years.

In addition to our commitment to support, photographers worldwide benefit from access to rental locations offering complete broncolor systems or specialized accessories for individual projects. Our dedication to quality extends beyond products to encompass educational workshops on lighting techniques – both on-site and online. Visit our website at www.broncolor.swiss, explore our YouTube channel, and follow our social media platforms for ongoing

inspiration from our vibrant community. Once you choose broncolor, rest assured that we provide regular software updates to enhance your product's functionality and, in some cases, even expand its capabilities. This proactive approach safeguards your investment and fosters a long-term partnership, enabling us to collaborate in shaping the future of photography lighting.

Education: Empowering the Future of Photography

At broncolor, we understand that today's students are the future of photography. That's why we are dedicated to fostering knowledge retention within the global photography industry. Through the broncolor Education Program, we offer valuable resources designed to facilitate interactive and engaging learning experiences for both educators and students. Additionally, we provide specially priced equipment for educational institutions, making it more accessible for aspiring photographers to join the broncolor community.



How important are joules for exposure?

When a flash device is triggered, it unleashes a lot of energy in a brief moment of only around one millisecond. The energy that's being emitted is stored in electronic devices that can hold the charge, reminiscent to the string of a bow holding the mechanical energy that's ready to be unleashed. Just like drawing a bow takes around one second, flash units also need to recharge their energy storages. That's why it takes a while before the next shot can be taken. The brightness of a flash unit is impressive, during the short moment it's shining, it's outputting light at a rate on par with a stadium illumination of hundreds of thousands of watt, albeit only for a short period of time. For capturing a photo, that's all it takes and that's why a flash can be used to overpower very bright light sources or even the sun.

The energy of a flash unit, measured in joules (J) or watt-seconds (Ws), indicates how much electrical energy it can store and set free. However, this number alone doesn't determine the flash's brightness. The actual light output depends on how well the flash tube, reflector, and power cable work together. If these components are not well-matched, energy can be lost, resulting in less light. So, while joules or watt-seconds show the potential energy, the real brightness depends on the efficiency of the entire system. All broncolor products, including all cables, connectors and light formers are designed to deliver the most output from the stored energy.

Guide Numbers and f-Stops

For amateur and portable flash units, guide numbers are often used. A guide number is calculated by multiplying the f-stop by the distance between the light source and the subject. For example, if the distance is 2 meters and the f-stop is f/11, the guide number is 22 (2×11). To be reliable, this value must remain constant, which happens when light intensity decreases with the square of the distance. This condition is usually met by small light sources relative to their distance from the subject, typical of amateur flash units.

However, professional flash systems often have larger light sources, making the guide number less reliable since their light doesn't diminish as predictably. For these systems, the guide number is more theoretical and less practical. For flash systems, therefore, the guide number is a purely theoretical value and not a usable parameter. broncolor therefore simply quotes the expected f-stop at a distance of 2 meters for its units. The advantage for photographers is that they get a definite statement about exposure that has already taken into account all the losses and efficiencies not accounted for in the energy rating. The figure also allows users to compare the effects of different reflectors.

Light Quality

Light quality depends on two factors: first the quality of the light shaper that is used, and second the precision of the flash unit's control system. If light quantity or light quality of different exposures are not identical, colour shifts can't be avoided. broncolor flash systems offer precise control of both while allowing the user to work creatively with them. Our product's outstanding repetitive precision is especially important for image series, such as for catalogues and animations.

We have two refined technologies in our portfolio. The high-end Scoropower packs are equipped with broncolor's patented ECTC (Enhanced Colour Temperature Control) technology, which ensures a constant (or deliberately variable) colour temperature over the entire control range. Our state-of-the-art Satos is modulating the flash hundreds of times while it's being emitted to produce the most refined light the limits of physics allow.

Full Control

Our devices feature an intuitive user interface that can be used efficiently and can connect to a WiFi network. We're offering apps for iOS, Android, Windows and macOS for controlling individual lamps or entire studios.

We are also providing the bronAPI to system integrators allowing them to control our devices through their third-party solution.



 **Razer**
SINCE 2005



Innovative Technologies – made in Switzerland

Innovation as motivation.

We've been bringing many innovations to the market over the course of every product generation. Some have called those technologies ground breaking and they are constantly evolving, driven by a relentless pursuit of optimisation and innovation. We continuously refine and enhance our work through ongoing research in electrical technologies, new materials, and alternative manufacturing processes. Since photography is all about light, our mission is to lead its evolution, pushing the boundaries of professional lighting technology.

Cut-off technology

Flash duration and light output are the two decisive factors in light control. A microprocessor in Satos and Scoro power packs as well as monolights of the Siros S and Siros L series will calculate for you the shortest or longest flash duration for a given output. This feature enables rapid flash sequences with up to 120 flashes per second.

Constant colour temperature – ECTC

The second generation of our patented ECTC (Enhanced Colour Temperature Control) technology, which adapts flash voltage and duration to each other, achieves a constant colour temperature over the entire variation range. With the Scoro S you can change the colour temperature in calibrated steps of +/- 200 K at constant power output. When multiple lamp heads are connected, constant colour temperature is guaranteed on all channels up to an asymmetry of two f-stops.

Wide Asymmetry Constant Colour Temperature – WA-ECTC

The unparalleled third generation of our ECTC technology exclusively available on Satos allows for the same fine-tuning of colour temperature as the second generation and allows adjustment per channel and with wide asymmetry across the full dynamic range.

Individual power distribution

Satos and Scoro S have three lamp outlets, the Scoro E power packs have two each. Each lamp outlet has an individual power controller with a display, which is adjustable independently of the other outlets. The unit therefore behaves like three (or two) independent power packs. You have a choice of up to 11 f-stops to set the flash output you need. That is a control range from 1.6 to 3200 J.

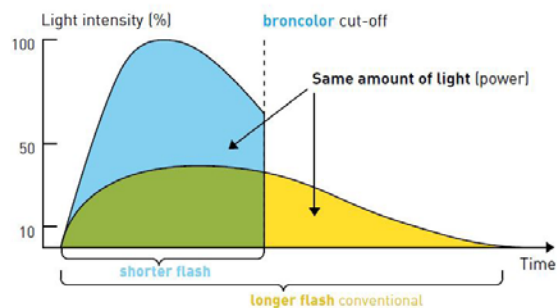
Speed Mode

In Speed Mode flash duration is reduced by up to 50%, with reduction of total light output by less than one f-stop. In this way you can achieve at least ten exposures per second at nominal output, or up to 120 at reduced power. This converts broncolor power packs and monolights with cut-off technology into high performance flash units whenever speed is of the essence. With their active fan cooling, even long series of flashes are no problem.

Speed meets precision – unbeatable flash times

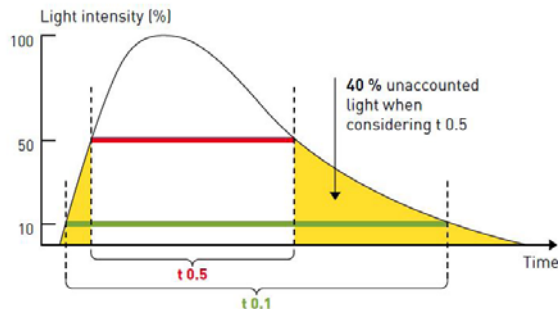
Cut-off technology

For consistent flash energy, flash durations can be substantially shorter using broncolor cut-off technology than is possible with conventional units:



$t\ 0.1 = 1/600\text{ s}$

Comparison without broncolor cut-off technology



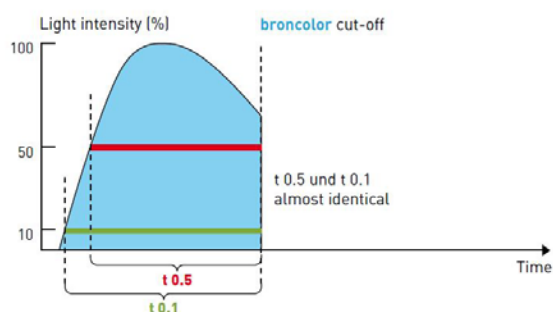
Why t 0.1 and not t 0.5?

t 0.5 does not measure all light relevant for the complete shooting: light is radiated before and after t 0.5, which can result in blurring.



$t\ 0.5 = 1/600\text{ s}$

Comparison with broncolor cut-off technology



The total quantity of light is taken into account.
No blurring, because the flash is cut off.

Good to know

There is no generally valid factor for converting t 0.5 to t 0.1. It is therefore not correct to use t 0.5 to compare different flash durations; for comparisons t 0.1 must be known as well.

Absolute colour constancy with ECTC*

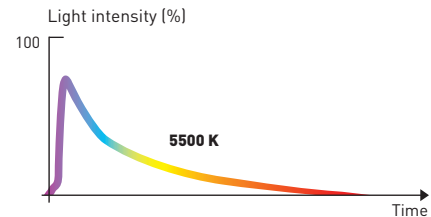
*ECTC Enhanced Colour Temperature Control

Constant colour temperature

Patented ECTC technology enables a constant average colour temperature over the entire output range.

The colour temperature tolerance band is only +/- 50 Kelvin.

It controls the amplitude of the blue light component according to the warmer red component, which originates at cut-off.



with broncolor technology

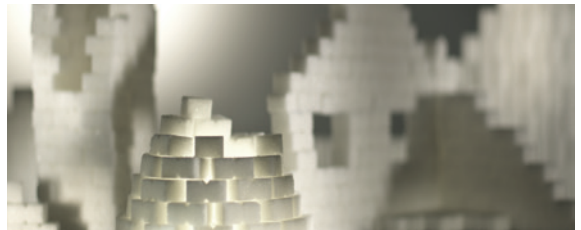
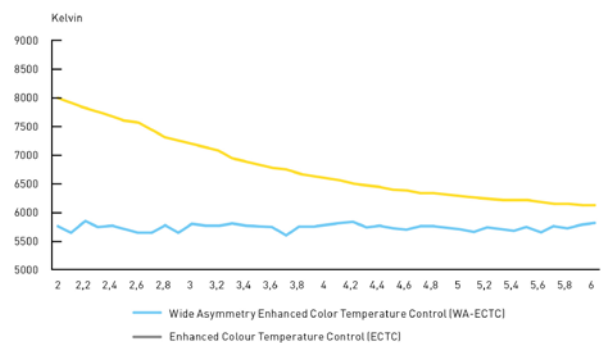
With this unique technology broncolor provides output control over 11 f-stops, or 10 f-stop steps, at constant colour temperature.

There is no other technology that compares with this performance.

If multiple lamp heads are connected, the constant colour temperature is guaranteed on all channels with an asymmetry of up to two f-stops. With WA-ECTC the colour temperature stays consistent across the full dynamic range.

Even for fast flash sequences, constant colour temperature and quantity of light are the primary quality criteria for broncolor products.

Output in f-stops of lower power lamp. High power lamp at full remaining power.



without broncolor technology

Control meets efficiency – enormous control range, individually controllable

Individually Controllable Power Distribution

Satos and Scoro S units have three and Scoro E has two lamp outlets. Each lamp outlet has an individual power controller and is adjustable independently of the other outlets. The units therefore behave like three (or two) independent power packs. On Satos you can take it one step further and even control colour temperature and flash duration independent of the settings of the other ports.

The individual power distribution combined with the large control range, at its maximum from 1.6-3200 Joules, allows the photographer an almost free choice of f-stop.

The required flash output can then be chosen from up to 11 f-stops, or ten f-stop steps. A further power display provides information about the total energy supplied by the power pack. With the buttons beside the display it is possible to change the total energy of all channels simultaneously keeping the proportions between the lamps constant.



Aperture closed



Aperture open

Record Charging Times, Even Down to Zero

In Speed Mode, Scoro even manages 0.4 s at 1600 J. The shortest charging time is an unbelievable 0.02 s. Satos takes recharge performance to the next level by not requiring any recharge at all if flash energy is only a fraction of the total stored energy (1600 J or 3200 J, depending on model).

This technology allows for stroboscopic photography with a single flash unit, making motion sequences visible. By alternating multiple power packs, the number of flashes per second can be doubled.



with broncolor technology



without broncolor technology

High-performance flash systems always consist of a separate power pack and one or more lamps. Advantages compared to monolights are the ability to connect several lamps, the big choice of special lamps (e.g. diffused-source lamps, spots, etc.), and the comprehensive range of accessories. The extensive range offers the right solution for every lighting assignment and every budget. Power packs, lamps and accessories from broncolor are, with very few exceptions, also compatible with current monolights, and offer an enormous spectrum of flash energies.

Satos and Scoro feature individual power distribution. The output of all connected lamp outputs can be individually regulated over a 10 f-stops range on a Scoro 3200 J and even over 11 f-stops on a Satos 3200 J. Within a very narrow variation range, the colour temperature is constant. If multiple lamp heads are connected, the constant colour temperature is guaranteed on all channels with an asymmetry of up to three f-stops on a Scoro. Satos offers constant colour with any asymmetry. Both packs make it possible to work with extremely short flash durations. With

Scoro, the shortest flashes last 1/10000 s, with Satos they are even shorter by a factor of 3.

Numerous additional programmable functions (such as sequence, interval, delay, alternate, etc.) enable widely differing applications. Additionally, Satos allows you to switch to continuous light mode and to work with batteries, completely independent from the power grid.

On all broncolor studio power packs the modelling light can be adjusted to be proportional to the differing flash outputs. In this way the lighting situation can be assessed in the correct relationship to the effective flash output. Additionally, Satos (in combination with Pulso L lamp heads) allows you to choose between daylight or tungsten-balanced modelling light.

The robust housing protects the electronics in hard daily use, and the cooling fan and thermostat protect against damage from overheating. Modern micro-processor technology controls the various functions and simultaneously monitors the capacitor and operating modelling-light voltages. With their high-precision regulation of flash voltage, broncolor power packs are ideal for e-commerce and multi-shot digital photography. All models are equipped with a photocell and have a large adjustment range in 1/10 f-stop steps and can also be triggered remotely with the RFS2 system.



Satos

- 3 lamp outlets
- Up to 120 flashes per second
- intuitive user interface and integrated help function
- Multiple high power flashes with minimum time between flashes (0.008s)
- Consistent flash colour temperature over the entire control range with full asymmetry
- High-Speed-Sync (HSS)
- 5.7 inch multi-touch LCD display
- control range over 11 f-stops in 1/10 or 1/1 f-stop intervals
- Dual Power Management (batteries and power supplies)
- flash colour temperature adjustable for each channel
- works with all voltages from 100 – 240 VAC
- timing functions for each channel (alternate, delay, sequence)
- bidirectional communication with Pulso L lamp*
- flash, continuous light (LED) or mixed light*

* only with Pulso L lamp

**Satos 1600 J | 31.070.XX****Satos 3200 J | 31.071.XX****Normal mode (Opt.)**

Flash energy	1600 J	3200 J
Aperture at 2 m distance, ISO 100, P70 Normal reflector	64 ² / ₁₀	90 ⁴ / ₁₀
Flash duration (min. max. energy)	1/6000s 1/220s	1/5400s 1/100s

The colour temperature remains constant throughout the entire control range.

Speed mode

Flash energy	650 Joules	1212 Joules
Aperture at 2 m distance, ISO 100, P70 Normal reflector	32 ² / ₁₀	64
Flash duration (min. max. energy)	1/8900s 1/1,400s	1/8100s 1/810s

In speed mode, the colour temperature is colder (+300K), however, consistent over the energy adjustment range.

Shortes mode (t 0.1 min)

Shortest possible flash duration	1/28500s	1/28500s
---	----------	----------

For technical reasons, the colour temperature of the flash becomes more bluish, depending on flash energy.

Minimum time between flashes (applicable to all modes)	0.008 s	0.008 s
Readiness indicator	Optical and acoustic (can be switched off), done at achieving 100% of the selected energy	
Lamp connections	3	
Power distribution	Symmetrical and individually asymmetrical	
Adjustment range of the flash energy	over 10 apertures (2 – 12 1.5 – 1600 J) in 1/10 or complete aperture intervals	over 11 apertures (2 – 13 1.5 – 3200 J) in 1/10 or complete aperture intervals
Colour temperature (flash)	Standard value (opt.): 5,700 K (tolerance +/- 50 K) per channel adjustable from - 300 K to + 600 K (limitations depending on flash mode)	
Modelling light	2800 K or 5500 K full, low, proportional LED max. 90 W per channel	
Flash triggering	Manual release button, photocell, RFS 2, synchronous cable, bronControl app (integrated WiFi module)	


Satos 1600 J | 31.070.XX

Satos 3200 J | 31.071.XX

Special functions ("timing")

Alternate	Alternate enables "Ping-Pong triggering" of up to 12 flash heads
Delay	Adjustable individually for each of the three Satos lamp channels (max. 50s)
Sequence	Each of the three Satos lamp channels can be set to an individual sequence (max. 100) and individual interval (max. 10.0s)
Additional functions	High-Speed-Sync (HSS), Strobe

Continuous light (with Pulso L)

Colour temperature	2800 to 6800 K in 50 K intervals	
Colour rendering index (CRI)	typical >97	
Green / Magenta Correction (colour cast)	-25G to +25G (limitations at certain colour temperatures)	
Dimmability	Apertures 2 to 13. in 0.1 intervals	
Update option	via USB port	
Display	5.7 inch, LCD, multi-touch, extremely robust cover glass	
Cognition Light	LED ring (Colours: blue, green, purple, yellow, turquoise)	
Cooling system	active (fan)	
Compatibility	Fully compatible: Pulso L lamp Modelling light only during power supply operation: Pulso G, Unilite, Picolite	
Menu language	English, German, French, Korean, Japanese, Italian, Spanish, Chinese simpl., Polish	
Use	in dry environment	
Temperature range of use	-10°C to 40°C	
Storage temperature	-10°C to 50°C	
Power pack weight unequipped (with no power supplies or batteries, no power cable, no dust cover)	11.4 kg (25.13 lbs)	16.6 kg (36.60 lbs)
Power pack dimensions	L: 311 mm (12.24 in) W: 224 mm (8.82 in) H: 321 mm (12.62 in) incl. handle	L: 311 mm (12.24 in) W: 224 mm (8.82 in) H: 433 mm (17.03 in) incl. handle
Slide-in battery (type)	Li-Ion, 37 V / 92 Wh	
Slide-in battery (weight)	980 g (2.16 lbs)	
Slide-in battery (dimensions)	L: 233 mm (9.20 in) W: 80 mm (3.50 in) H: 35 mm (3.80 in)	
Slide-in battery (charging time when not in use)	approx. 60 minutes	
Slide-in power supply unit	48 V / 400 W	
Slide-in power supply unit (weight)	830 g (1.82 lbs)	
Slide-in power supply unit (dimensions)	L: 233 mm (9.20 in) W: 80 mm (3.50 in) H: 35 mm (3.80 in)	
Power pack power consumption	1800 W	
Connected loads	230 V 10 A 120 V 15 A 100 V 15 A	
Approvals	CE, FCC, UKCA, RoHS	

Satos 1600 J (1 | 1)

31.075.XX

includes:

- 1 Satos 1600 J
- 1 battery
- 1 power supply
- 1 mains cable (country-specific)
- 1 dust protection cover
- 1 Quick Guide
- 1 safety instructions

**Satos 3200 J (2 | 2)**

31.076.XX

includes:

- 1 Satos 3200 J
- 2 batteries
- 2 power supplies
- 1 mains cable (country-specific)
- 1 dust protection cover
- 1 Quick Guide
- 1 safety instructions

**Satos 3200 J (1 | 1)**

31.077.XX

includes:

- 1 Satos 3200 J
- 1 battery
- 1 power supply
- 1 mains cable (country-specific)
- 1 dust protection cover
- 1 Quick Guide
- 1 safety instructions



Accessories

Slide-in battery Li-Ion, 37 V / 92 Wh

33.115.00
23.3 × 8 × 3.5 cm (9.20 in× 3.50 × 3.8 in);
980 g (2.16 lbs)



Slide-in power supply, 48 V / 400 W

33.115.00
23.3 × 8 × 3.5 cm (9.20 in× 3.50 × 3.8 in);
830 g (1.82lbs)



Charging time when not in use approx. 60 minutes

Charging station for up to 4 slide-in batteries

36.198.XX



Product use	For simultaneous charging of up to 4 lithium-ion batteries 37 V / 92 Wh (36.180.00) suitable for the broncolor Satos power pack
Connected loads	100-240 V / 50-60 Hz / 10 A
Power consumption	Max. 600 W
Charging duration	Approx. 80 minutes (for one or all batteries)
Length x Width x Height	303 x 212 x 148 mm 11.93 x 8.35 x 5.83 in
Weight (excl.d. mains cable)	3.45 kg 7.61 lbs
Cooling	Fan
Temperature range of use	0°C to 35°C
Storage temperature	-10°C to 50°C
Approvals	CE, FCC, UKCA, RoHS

Accessory set for stacking the charging station for up to 4 slide-in batteries

36.198.XX
Can only be used for the charging station for up to 4 slide-in batteries for Satos (36.198.00).
Dimensions (Ø × h): 25.5 x 7.5 mm (0.98 x 0.29 in), Weight: 7 g (0.01 lb)



Scoro S

- Ultra-fast flash durations down to 1/10000 s (t 0.1) or 1/14000 s (t 0.5) thanks to innovative cut-off technology
- Extremely powerful lighting – outputs up to 3200 J
- Three lamp outlets, individually switchable and with fully independent control of
- ECTC (Enhanced Colour Temperature Control) technology for constant colour temperature, and selective colour temperature changing when required
- Long-life halogen modelling light, up to 3 × 650 W and five proportionality stage:
- Robust, easily readable 8 cm LED display (240 × 180)
- Elegant, robust metal housing with carbon-look and massive carrying handle
- Speed Mode (Charging time and Flash duration)
- Memory function
- Further special functions, such as alternation, delay and stroboscopic effects

**Scoro 1600 S WiFi / RFS 2 | 31.046.XX****Scoro 3200 S WiFi / RFS 2 | 31.047.XX**

Normal mode (Opt.)			
Flash energy	1600 J		3200 J
f-stop at 2 m, 100 ISO, reflector P70	64 2/10		90 2/10
Flash duration at max. energy* t 0.1 (t 0.5)	1/325 s (1/760 s)		1/160 s (1/390 s)
Variation range for flash duration* t 0.1 (t 0.5)	1/150 – 1/10000 s (1/450 – 1/14,000 s)		1/85 – 1/10000 s (1/240 – 1/14,000 s)
Charging time (min. – max. energy) at	230 V	0.02 – 0.6 s	0.02 – 1.3 s
	120 V	0.02 – 1.0 s	0.02 – 2.0 s
	100 V	0.02 – 1.1 s	0.02 – 2.2 s
	Switchable to slow charge		Switchable to slow charge
Speed Mode			
Flash energy	1200 J		2400 J
f-stop at 2 m, 100 ISO, reflector P70	45 9/10		64 9/10
Flash duration at max. energy* t 0.1 (t 0.5)	1/435 s (1/1600 s)		1/215 s (1/860 s)
Variation range for flash duration* t 0.1 (t 0.5)	1/150 – 1/10000 s (1/450 – 1/14,000 s)		1/85 – 1/10000 s (1/240 – 1/14,000 s)
Charging time (min. – max. energy) at	230 V	0.02 – 0.4 s	0.02 – 0.8 s
	120 V	0.02 – 0.6 s	0.02 – 1.2 s
	100 V	0.02 – 0.7 s	0.02 – 1.4 s
Ready display	Visual and audible (can be switched off), activated when 100% of the selected energy is reached		
Lamp outlets	3 outlets with flash cut-off and ECTC		
Power distribution	Symmetrical and individually asymmetrical		
Control elements	Dust and scratch-resistant, illuminated silicone keypad, setting by radio remote control		
Control range for flash energy	Over 10 f-stops		Over 11 f-stops
	in 1/10 or full f-stop intervals. Choice of joules or percent for LCD display		
Colour temperature	ECTC technology (Enhanced Colour Temperature Control) for constant or specifically adjustable colour temperature		
Modelling light	Halogen max. 3 × 650 W at 200 – 240 V / Halogen max. 3 × 300 W at 100 – 120 V Proportional to flash energy, also full and low settings.		
Additional functions	Proportionality can be adapted to other broncolor power packs and to monolights t 0.1, sequence, delay, interval, colour temperature, alternating, stroboscopic, memory, and many more		
Flash release	Manual release button, photocell, infrared RFS or RFS 2.2 receiver, bronControl App sync cable, IRX 2		
Number of sync sockets	1		1
Computer connection for remote control	1		1
Stabilised flash voltage	+/- 0.3%		+/- 0.3%
Power requirements	16,0 A (230 V)	15,0 A (120 V) 15,0 A (100 V)	16,0 A (230 V) 15,0 A (120 V) 15,0 A (100 V)
Dimensions without handle	28.8 × 19 × 29.5 cm (11.3 × 7.5 × 11.6 in)		28.8 × 19 × 40 cm (11.3 × 7.5 × 15.7 in)
Weight	8.9 kg (19.6 lbs)		12.1 kg (26.7 lbs)

* Automatic regulation of flash duration and energy for optimum colour temperature. Preselection of minimum flash duration possible

Scoro E

- Ultra-fast flash times down to 1/8000 s (t 0.1) or 1/12000 s (t 0.5) thanks to innovative cut-off technology
- Extremely powerful lighting – outputs up to 3200 J
- Two lamp outlets with individual cut-off and fully independent control of each
- ECTC (Enhanced Colour Temperature Control) technology for constant colour temperature of every firing
- Long-life halogen modelling light, up to 3 × 650 W and five proportionality sta
- Robust, easily readable 8 cm LED display (240 × 180)
- Elegant, robust metal housing with carbon-look and massive carrying handle



Scoro 1600 E WiFi | RFS 2 | 31.066.XX

Scoro 3200 E WiFi | RFS 2 | 31.066.XX

Flash energy	1600 J	3200 J
f-stop at 2 m, 100 ISO, reflector P70	64 2/10	90 2/10
Flash duration at max. energy* t 0.1 (t 0.5)	1/325 s (1/760 s)	1/160 s (1/390 s)
Variation range for flash duration* t 0.1 (t 0.5)	1/265 – 1/8000 s (1/760 – 1/12,000 s)	1/132 – 1/8000 s (1/390 – 1/12,000 s)
Charging time (min. – max. energy) at	230 V 0.06 – 1.0 s	0.06 – 1.7 s
	120 V 0.06 – 1.4 s	0.06 – 2.4 s
	100 V 0.06 – 1.5 s	0.06 – 2.6 s
	Switchable to slow charge	Switchable to slow charge
Ready display	Visual and audible (can be switched off), activated when 100% of the selected energy is reached	
Lamp outlets	2 outlets with flash cut-off and ECTC	
Power distribution	Symmetrical and individually asymmetrical	
Control elements	Dust and scratch-resistant, illuminated silicone keypad, setting by radio remote control	
Control range for flash energy	Over 8 f-stops	Over 9 f-stops
Colour temperature	in 1/10 or full f-stop intervals. Choice of joules or percent for LCD display	
	ECTC (Enhanced Colour Temperature Control) technology for constant colour temperature	
Modelling light	Halogen max. 2 × 650 W at 200 – 240 V / Halogen max. 2 × 300 W at 100 – 120 V	
Additional functions	Proportional to flash energy, also full and low settings	
	Proportionality can be adapted to other broncolor power packs and to monolights t 0.1, sequence	
Flash release	Manual release button, photocell, RFS or RFS 2.2 receiver, sync cable bronControl App	
Number of sync sockets	1	1
Computer connection for remote control	1	1
Stabilised flash voltage	+/- 0.5%	
Power requirements	16.0 A (230 V) 15.0 A (120 V) 15.0 A (100 V)	16.0 A (230 V) 15.0 A (120 V) 15.0 A (100 V)
Dimensions without handle	28.8 × 19 × 29.5 cm (11.3 × 7.5 × 11.6 in)	28.8 × 19 × 40 cm (11.3 × 7.5 × 15.7 in)
Weight	8.7 kg (19.2 lbs)	12 kg (26.5 lbs)

* Automatic regulation of flash duration and energy for optimum colour temperature. Preselection of minimum flash duration possible

Stelos – Make the world your studio

Stelos is the latest flagship model among broncolor's mobile monolights. With 800 joules of flash energy, legendary broncolor light quality, and battery operation with simultaneous charging during use, you can make the world your studio.



Flash Colour Temperature

A first for the Stelos monolight is the variable adjustment of flash colour temperature – a feature previously reserved for high-end power packs. Depending on the power setting, the flash colour temperature can be adjusted from -100 K to +800 K. The LED modelling light is adjustable from 2700 to 6500 K.



V-Mount Battery

Thanks to the universal V-Mount interface, you can use high-quality batteries from broncolor as well as compatible third-party suppliers. Charging is conveniently possible either with the included 140-watt fast charger or with any standard USB-C charger, giving you maximum flexibility in the studio or on location.



Easy Operation

The controls are modern and intuitive: 2 buttons, one rotary/push dial, and a clear menu save you valuable time on set. The bright, high-contrast LCD display can be customised – from 'minimalist' to 'everything at a glance'.



Stelos combines maximum performance with impressive mobility. Its fast flash durations and precise colour stability open up new creative possibilities. At the same time, it is robust enough for heavy use on set and light enough to take anywhere.



Connectivity

Fully compatible with all broncolor RFS 2 and 3 transmitters, the bronControl app, and the bronAPI for integration into your own applications. All parameters can also be adjusted without the app, ensuring control whether you're working in the studio, on location, or integrating Stelos into complex lighting setups.



Robust

Thanks to high-quality materials and components and Swiss manufacturing, Stelos will serve you faithfully for years – no matter how far your journeys take you. broncolor's legendary spare parts availability and repairability are second to none.



Tiltable

Our development team has listened to numerous user suggestions: Stelos can be tilted 90° up and down on a stand. This wide range of adjustment makes it easy to position the light precisely, whether you need to illuminate from above, below, or at challenging angles on set.



Stelos 800 L

	Technical data
Flash energy	max. 800 J
f-stop at 2m, 100 ISO	
- with Wide angle umbrella reflector Ø 120 mm	22 3/10
- with P70 normal reflector	45 3/10
Flash duration t0.1 opt (t 0.5 opt)	
- min. energy	1/9'200 s (1/16'000 s)
- max. energy	1/250 s (1/750 s)
Flash duration Speed mode t0.1 (t0.5)	
- min. energy	1/11'500 s (1/21'200 s)
- max. energy (power level 1.0 to 6.8 only)	1/5'400 s (1/8'700 s)
Flash duration Shortest Mode t0.1 min (t 0.5 min)	
- min. energy	1/19'500 s (1/56'400 s)
- max. energy	1/250 s (1/790 s)
Flash recycling time (at 28V) (100% of selected energy)	0.008 - 2.5 s (min. / max. energy)
Number of full power flashes per battery charge	>300
Setting range for flash energy	0.78 - 800 J over 10 f-stop intervals, in steps of 1/10 or full f-stops
Flash colour temperature	adjustable, -100 K to +800 K, depending on selected energy
Modeling light (MOD)	LED 49 Watt typical 2700 to 6500 K
Colour rendering index, CRI (MOD), 100% power	typically 98
Flash release	manual trigger button, photocell, sync cable, with built-in broncolor RFS receiver (compatible with RFS 2.1, RFS 2.2, and RFS 3)
Remote control	bronControl App or bronAPI
Ready indicator	visual (via modelling light) and acoustic (can be switched off)
Extra functions	sequences (flash series) up to 100 flashes alternating (with bronControl App) delay (up to 50 s) High-Speed-Sync (HSS); power level 5.4 to 11.0 only Speed Mode and t 0.1 min for fastest flash times integrated umbrella holder freehand bayonet locking system daily and total flash counter customisable display interface
	Interface
Display	bright 2.8" LCD with excellent readability
User interface	one rotary controller, two buttons, intuitive, minimalistic or "all at a glance"
Cooling	temperature-controlled fan
	Dimensions
Length (Handle to tip of protective glass)	265 mm (10.4 in)
Length (Handle to tip of transport protective cap)	270 mm (10.6 in)
Height (folded stand mount to top of housing)	165 mm (6.5 in)
Width	167 mm (6.6 in)
Weight	
(without battery, incl. Wide Angle Umbrella Reflector Ø 120 mm, without protective cap)	2'800 g (6.17 lbs)
Weight	
(incl. battery & Wide Angle Umbrella Reflector Ø 120 mm, without protective cap)	3'390 g (7.47 lbs)
Weight of battery	590 g (1.30 lbs)

Battery	Li-Ion, 88Wh, 28.8V, V-Mount interface, item number: 36.170.00 can be charged while in use via USB-C (e.g. with broncolor USB-C charger 140 W item number: 36.171.00) Optimal performance can only be guaranteed when using the original broncolor Li-Ion battery 28 V V-Mount (item no. 36.170.00). The use of third-party batteries is at the user's own risk.
Battery dimensions	12.0 x 8.3 x 6.2 cm (4.7 x 3.3 x 2.4 in)
Stand mount	for bolts 12 mm (0.47 in), 3/8" thread and bolts 16 mm (0.63 in)
Other information	
WiFi	2.4GHz (only Enterprise mode)
Firmware update	WiFi
Temperature range of use	0 °C to 40 °C
Temperature storage	-10 °C to 45 °C
Cognition light	2x (left/right) 5 colours (blue, green, purple, yellow, turquoise)
Compatibility	compatible with broncolor bayonet
Menu languages	English, German, French, Korean, Japanese, Italian, Spanish, Chinese simpl., Polish, Portuguese, Dutch
Warranty period	factory warranty of 2 years from date of purchase (for the first owner)
Approvals	CE, FCC
Standards	Stelos: EN 60598-2-4:2017, EN 60598-1 :2020, EN 55032:2015 (Class A), EN 55035:2017, EN61000-3-2:2019, EN61000-3-3:2013+A1:2019, ETSI EN 301 893 V2.1.1, ETSI EN 300 328 V2.2.2, ICES 003, FCC Title 47 CFR Part 15 sub B, C and E. Battery: UN ST/SG/AC.10/11/Rev.8 part III UN38.3, IEC 62133-2:2017+AMD1:2021
Item number	31.756.XX

Photometry with various broncolor light shapers

Stelos 800 J

Aperture at 2 m distance, ISO 100

45 ³/₁₀



P70

32 ⁵/₁₀



L40

32 ⁵/₁₀



Para 88

22 ³/₁₀



Wide-angle
umbrella reflector
Ø 120 mm

16 ¹/₁₀



Softbox 60 x 100 cm



broncolor
stelos

broncolor

CE
Type: SL 172-30
Nominal voltage: 28.2V
Energy: 65Wh
Access: 84013
www.broncolor.ch/swiss

Stelos - The single unit set

31.756.XX



1x Stelos 800 L
1x Protective glass matte
34.377.00



1x Wide-angle umbrella reflector Ø 120 mm
33.175.00



1x Protective cap
33.171.00



1x Li-Ion battery 28 V V-Mount
36.170.00



1x USB-C charger (incl. power adapters)
36.171.00



1x USB-C cable 3m
36.172.00

Inspiration Kit with 2 Stelos 800 L

31.770.XX

Unleash your creativity with the Inspiration Kit, a complete lighting solution designed for photographers who demand flexibility, power, and precision on every shoot. Whether you're working in the studio or on location, this kit equips you with two Stelos and everything you need to shape light beautifully and precisely.

	2x Stelos 800 L 2x Protective glass matte	34.377.00
	2x Wide-angle umbrella reflector Ø 120 mm 2x Protective cap	33.175.00 33.171.00
	2x Li-Ion battery 28 V V-Mount 2x USB-C cable 3m	36.170.00 36.172.00
	1x USB-C charger (incl. power adapters) 1x Speed ring broncolor for Softbox / Octabox 1x Umbrella silver/black Ø 105 cm	36.171.00 33.401.00 33.570.00
	1x Softbox 60 x 100 cm 1x Flash Bag 2	33.562.00 36.532.00

Pro Kit with 3 Stelos 800 L

31.780.XX

Step up your lighting game with the Pro Kit – the ultimate monolight solution for professional photographers who need even more flexibility and even more creative options . With three Stelos, a wide range of light shapers, 3 batteries, and robust stands, this kit is built for demanding shoots in the studio or on location.

			3x Stelos 800 L	
			3x Protective glass matte	34.377.00
			3x Wide-angle umbrella reflector Ø 120 mm	33.175.00
			3x Protective cap	33.171.00
			3x Li-Ion battery 28 V V-Mount	36.170.00
			3x USB-C cable 3m	36.172.00
			2x USB-C charger (incl. power adapters)	36.171.00
			1x Speed ring broncolor for Softbox / Octabox	33.401.00
			1x Umbrella silver/black Ø 105 cm	33.570.00
			1x Softbox 60 x 100 cm	33.562.00
			1x L40 standard reflector	33.115.00
			3x Junior stand AC	35.100.00
			1x Flash Bag 3	36.533.00
			1x Accessory Bag	36.535.00

Siros

The Siros monolight is pure innovation. A little light giant with infinite possibilities and totally uncompromising broncolor quality.

It is remarkable for its ultra-fast flash durations, an enormous control range and short charging times. Siros is powerful and universal. Enclosed in a robust housing, and providing up to 800 J, it can be triggered using the broncolor RFS 2 radio releases. Siros is available with 400 or 800 J and in variants "S" (for studio, connected to power grid) and "L" (location, battery operated).

In both Siros S and L, the ECTC technology you know from our high-end power packs controls the flash curve and guarantees flash durations from 1/13000s (t 0.5) and constant colour over the entire control range.

The enormous control range, over eight f-stops and down to 2 Joules, gives the photographer an unrestricted choice of aperture. And the lightning-quick charging times, 0.02 to 0.9 s at 400 Joules, mean you never have to wait. broncolor has one of the most comprehensive ranges of light shapers, and Siros is fully

integrated into this system of unlimited creative opportunities. Two new reflectors have been specially developed for Siros: an umbrella reflector, and a size-optimised standard reflector, the L40, which features a snap-in system for mounting honeycomb grids.

All the basic functions of Siros can be operated using the "bronControl" app. As soon as Siros is logged in to a WiFi network, several devices in a studio, clearly identified by different-coloured LEDs, can be controlled using a smartphone, a tablet or also a desktop computer.





broncolor
siros

RECONNECT
STUDIO 7

AUDIO SEQ 10 SPEED ECO

< 6.0 >



MOD. LIGHT

TEST

STANDBY

MORE

LAMPS

5.0

MORE

5.0

MORE

5.0

MORE

Siros S

- Enormous control range for flash energy, up to 9 f-stops
- Flash can be triggered using RFS 2.1, PocketWizard or infrared
- Radio control using "bronControl" App or RFS 2.2
- Easy-to-use rotary controller and simple operation
- Additional function: flash sequence (flash series)
- USB connection for software updates
- Speed Mode for fast flash times



Siros 400 S WiFi / RFS 2 | 31.623.XX

Siros 800 S WiFi / RFS 2 | 31.643.XX

Flash duration	400 J	800 J
f-stop at 2 m distance, 100 ISO		
with reflector L40	22 ⁵ / ₁₀	32 ⁸ / ₁₀
with reflector P70	32 ⁵ / ₁₀	45 ⁶ / ₁₀
Flash duration t0.1 (t0.5)		
min. energy	1/6500s (1/13000s)	1/4000s (1/8000s)
max. energy	1/1000s (1/2200s)	1/500s (1/1100s)
Charging time (for 100% of selected energy)		
230 V/50 Hz	0.02–0.95 s	0.07–1.9 s
120 V/60 Hz	0.02–0.95 s	0.04–1.9 s
100 V/50 Hz	0.02–1.4 s	0.08–2.9 s
Control range of flash energy	9 f-stops in ¹ / ₁₀ or full f-stop intervals	
	2–400 J	4–800 J
Colour temperature	ECTC technology (Enhanced Colour Temperature Control) for constant colour temperature - in	
max. energy/P70	speed mode ECTC is disabled.	
Power requirements	Automatic adaptation to the mains (AC-line) voltage 100–120 V/50–60 Hz: 5.5 A, 200–240 V/50–60 Hz: 3.5 A Operation via external battery converter possible for mains-independent operation	
Modelling light	Halogen max. 300 W/120 V, off, proportional to flash energy or full power	
Flash triggering	Manual release button, photocell, sync cable, RFS 2.2	
Remote control	via bronControl app for mobile devices (only for units with integrated W-Lan)	
	RFS 2.2 transmitter	
Ready display	Visual and audible (can be switched off)	
Additional functions	- Sequences up to 50 flashes	
	- Integrated umbrella mount and integrated umbrella reflector	
	- Speed Mode for fastest flash durations	
Speed mode (Cut-off times)	Siros 400 S	Siros 800 S
	Level	Level
	t 0.1 (t 0.5) - speed Mode	t 0.1 (t 0.5) - speed Mode
	2 (1 J)	2 (3 J)
	1/8500 s (1/19000 s)	1/8500 s (1/19000 s)
	3 (3 J)	3 (6 J)
	1/8500 s (1/17000 s)	1/8000 s (1/18000 s)
	4 (6 J)	4 (13 J)
	1/8000 s (1/17000 s)	1/8000 s (1/17000 s)
	5 (12 J)	5 (25 J)
	1/8000 s (1/17000 s)	1/8000 s (1/15000 s)
	6 (25 J)	6 (50 J)
	1/7500 s (1/15000 s)	1/7500 s (1/13000 s)
	7 (50 J)	7 (100 J)
	1/6500 s (1/10000 s)	1/4000 s (1/7000 s)
	8 (100 J)	8 (200 J)
	1/4000 s (1/6000 s)	1/3000 s (1/4000 s)
	9 (200 J)	9 (400 J)
	1/2500 s (1/3000 s)	1/1500 s (1/1700 s)
	10 (400 J)	10 (800 J)
	1/700 s (1/2100 s)	1/300 s (1/1000 s)
Cooling	Fan, temperature controlled	
Dimensions (l x w x h)	32 x 13 x 18 cm (12.6 x 5.1 x 7.1 in)	
Weight	3.2 kg (7.1 lbs)	3.6 kg (7.9 lbs)

Siros L

- Enormous control range for flash energy, up to 9 f-stops
- Flash can be triggered using RFS 2.1, PocketWizard or infrared
- Radio control using "bronControl" App or RFS 2.2
- Easy-to-use rotary controller and simple operation
- Additional function: flash sequence (flash series)
- USB connection for software updates
- Speed Mode for fast flash times



Siros 400 L WiFi / RFS 2 | 31.710.XX

Siros 800 L WiFi / RFS 2 | 31.720.XX

Flash duration	400 J	800 J																																								
f-stop at 2 m distance, 100 ISO																																										
with reflector L40	22 ⁵ / ₁₀	32 ⁸ / ₁₀																																								
with reflector P70	32 ⁵ / ₁₀	45 ⁶ / ₁₀																																								
Flash duration t0.1 (t0.5)																																										
min. energy	1/6200 s (1/11300 s)	1/4400 s (1/7400 s)																																								
max. energy	1/400 s (1/1200 s)	1/250 s (1/700 s)																																								
Charging time at 28.8 V																																										
EcoMode	0.04–1.9 s	0.05–4.3 s																																								
Normal	0.03–1.2 s	0.03–2.7 s																																								
Control range of flash energy	9 f-stops in ¹ / ₁₀ or full f-stop intervals 1.5–400 J	4–800 J																																								
Colour temperature	5500 K	5500 K																																								
max. energy/P70																																										
Power requirements	Automatic adaptation to the mains (AC-line) voltage 100–120 V/50–60 Hz: 5.5 A, 200–240 V / 50–60 Hz: 3.5 A Operation via external battery converter possible for mains-independent operation																																									
Modelling light	Halogen max. 300 W/120 V, off, proportional to flash energy or full power																																									
Flash triggering	Manual release button, photocell, sync cable, optional with either integrated broncolor RFS 2.1																																									
Remote control	via bronControl app for mobile devices (only for units with integrated W-Lan) RFS 2.2 transmitter																																									
Ready display	Visual and audible (can be switched off)																																									
Additional functions	- Sequences up to 50 flashes - Integral umbrella mounting and integral umbrella reflector - Speed Mode for fastest flash durations - HS mode for use with fast shutter speeds (flash power level 4 to 10 only) - USB connection for software updates																																									
Speed mode (flash times)	Siros 400 L <table><tr><th>Level</th><th>t 0.1 (t 0.5) - speed Mode</th></tr><tr><td>2 (1 J)</td><td>1/9000 s (1/19000 s)</td></tr><tr><td>3 (3 J)</td><td>1/8500 s (1/17500 s)</td></tr><tr><td>4 (6 J)</td><td>1/8200 s (1/16000 s)</td></tr><tr><td>5 (12 J)</td><td>1/8000 s (1/15600 s)</td></tr><tr><td>6 (25 J)</td><td>1/7200 s (1/12000 s)</td></tr><tr><td>7 (50 J)</td><td>1/4600 s (1/17000 s)</td></tr><tr><td>8 (100 J)</td><td>1/3000 s (1/3600 s)</td></tr><tr><td>9 (200 J)</td><td>1/1550 s (1/1600 s)</td></tr><tr><td>10 (400 J)</td><td>1/400 s (1/250 s)</td></tr></table>	Level	t 0.1 (t 0.5) - speed Mode	2 (1 J)	1/9000 s (1/19000 s)	3 (3 J)	1/8500 s (1/17500 s)	4 (6 J)	1/8200 s (1/16000 s)	5 (12 J)	1/8000 s (1/15600 s)	6 (25 J)	1/7200 s (1/12000 s)	7 (50 J)	1/4600 s (1/17000 s)	8 (100 J)	1/3000 s (1/3600 s)	9 (200 J)	1/1550 s (1/1600 s)	10 (400 J)	1/400 s (1/250 s)	Siros 800 L <table><tr><th>Level</th><th>t 0.1 (t 0.5) - speed Mode</th></tr><tr><td>2 (3 J)</td><td>1/8700 s (1/18000 s)</td></tr><tr><td>3 (6 J)</td><td>1/8300 s (1/16000 s)</td></tr><tr><td>4 (13 J)</td><td>1/7800 s (1/14500 s)</td></tr><tr><td>5 (25 J)</td><td>1/7300 s (1/13000 s)</td></tr><tr><td>6 (50 J)</td><td>1/5000 s (1/72000 s)</td></tr><tr><td>7 (100 J)</td><td>1/3200 s (1/4100 s)</td></tr><tr><td>8 (200 J)</td><td>1/800 s (1/2100 s)</td></tr><tr><td>9 (400 J)</td><td>1/800 s (1/900 s)</td></tr><tr><td>10 (800 J)</td><td>1/250 s (1/700 s)</td></tr></table>	Level	t 0.1 (t 0.5) - speed Mode	2 (3 J)	1/8700 s (1/18000 s)	3 (6 J)	1/8300 s (1/16000 s)	4 (13 J)	1/7800 s (1/14500 s)	5 (25 J)	1/7300 s (1/13000 s)	6 (50 J)	1/5000 s (1/72000 s)	7 (100 J)	1/3200 s (1/4100 s)	8 (200 J)	1/800 s (1/2100 s)	9 (400 J)	1/800 s (1/900 s)	10 (800 J)	1/250 s (1/700 s)
Level	t 0.1 (t 0.5) - speed Mode																																									
2 (1 J)	1/9000 s (1/19000 s)																																									
3 (3 J)	1/8500 s (1/17500 s)																																									
4 (6 J)	1/8200 s (1/16000 s)																																									
5 (12 J)	1/8000 s (1/15600 s)																																									
6 (25 J)	1/7200 s (1/12000 s)																																									
7 (50 J)	1/4600 s (1/17000 s)																																									
8 (100 J)	1/3000 s (1/3600 s)																																									
9 (200 J)	1/1550 s (1/1600 s)																																									
10 (400 J)	1/400 s (1/250 s)																																									
Level	t 0.1 (t 0.5) - speed Mode																																									
2 (3 J)	1/8700 s (1/18000 s)																																									
3 (6 J)	1/8300 s (1/16000 s)																																									
4 (13 J)	1/7800 s (1/14500 s)																																									
5 (25 J)	1/7300 s (1/13000 s)																																									
6 (50 J)	1/5000 s (1/72000 s)																																									
7 (100 J)	1/3200 s (1/4100 s)																																									
8 (200 J)	1/800 s (1/2100 s)																																									
9 (400 J)	1/800 s (1/900 s)																																									
10 (800 J)	1/250 s (1/700 s)																																									
Cooling	Fan, temperature controlled																																									
Dimensions (l × w × h)	32 × 13 × 18 cm (12.6 × 5.1 × 7.1 in)	36 × 13 × 18 cm (14 × 5.1 × 7.1 in)																																								
Weight without battery	3.1 kg (6.8 lbs)	3.7 kg (8.2 lbs)																																								
Dimensions (l × w × h) battery	32 × 13 × 18 cm (12.6 × 5.1 × 7.1 in)	36 × 13 × 18 cm (14 × 5.1 × 7.1 in)																																								
Weight (battery)	0.6 kg (1.3 lbs)	0.6 kg (1.3 lbs)																																								

With their outstanding light quality, Siros monolights are the perfect complement for existing studio flash installations.

Siros 400 S or 800 S Expert Kit 2 WiFi / RFS 2

The perfect kit for professionals

31.665.XX Siros S or 31.685.XX Siros L

- 2 Siros 400 S or 800 S WiFi / RFS 2 (incl. umbrella reflector)
- 1 umbrella silver / black Ø 85 cm (33.5")
- 1 Softbox 60 x 60 cm (2 x 2 ft)
- 1 Speed Ring broncolor for Softbox / Octabox
- 2 Junior stand AC
- 1 Flash Bag 2
- 1 Accessory Bag
- 1 USB cable
- 2 mains cable (country-specific)
- 1 sync cable 5 m (16.4 ft)

Siros 800 S Pro Kit 3 WiFi / RFS 2

Everything the demanding professional needs to get going in studio or on location

31.695.XX

- 3 Siros 800 S WiFi / RFS 2 (incl. umbrella reflector)
- 1 Octabox 75 cm (2.5 ft)
- 1 Softbox 60 x 60 cm (2 ft x 2 ft)
- 2 Speed Ring broncolor for Softbox / Octabox
- 2 L40 standard reflector
- 3 Junior stand AC
- 1 Flash Bag 3
- 1 Accessory Bag
- 1 USB cable
- 3 mains cable (country-specific)
- 1 sync cable 5 m (16.4 ft)

Siros 400 L or 800 L Expert Kit 2 WiFi / RFS 2

A step up for the pro who wants more

31.750.XX Siros 400 L or 31.751.XX Siros 800 L

- 2 Siros 400 L or 800 L (with broncolor "HS")
- 2 Lithium-Ion batteries
- 1 battery charger
- 1 umbrella silver/black Ø 85 cm / 33.5 in
- 1 Softbox 60 x 60 (cm) / 2 ft x 2 ft incl. Speed Ring
- 1 sync cable 5 m / 16.4 ft
- 1 Outdoor trolley backpack
- 1 USB cable
- 1 sync cable 5 m (16.4 ft)

Each kit is supplied with a compact, practical Flash Bag trolley case. Accessories - such as stands, softboxes and umbrellas - can be stored in the special accessory bag, which is designed to be strapped on to the Flash Bag.



Accessories

Standard reflector L40

33.115.00

Ø18.2 × 11.8 cm (7.1 × 4.6 in)

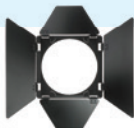
**Honeycomb grids for L40,**

33.194.00

Set of 3 pieces (narrow, middle, wide)

**Barn Door for L40,**

33.119.00

**Flash tube 400 / 800 J for Siros**

34.360.00 Siros S

34.362.00 Siros L

**Protecting matt**

34.369.00

5900 K

**Halogen modelling lamp 300 W / 120 V**

34.260.00

**Flash Bag 1.1**

36.536.00

Weight: 1.35 kg (2.9 lbs)

Dimensions: 45 × 20 × 23 cm
(17.7 × 7.8 × 9 in)**Flash Bag 2**

36.532.00

Weight: 3.5 kg (7.7 lbs)

Dimensions: 106 × 20 × 24 cm
(41.7 × 7.8 × 9.4 in)**Flash Bag 3**

36.533.00

Weight: 4.5 kg (9.9 lbs)

Dimensions: 103 × 21 × 37 cm
(40.5 × 8.2 × 14.5 in)**Accessory Bag**

36.535.00

Weight: 1.25 kg (2.75 lbs)

Dimensions: 102 × 14 × 20 cm
(40.1 × 5.5 × 7.8 in)**Umbrella silver 85 cm (33.4 in)**

33.574.00 silver

33.573.00 white

33.575.00 transparent

**Umbrella silver 105 cm (41.3 in)**

33.570.00 silver

33.571.00 white

33.572.00 transparent

**bronControl App**

App to control all the broncolor products with built in WiFi module with Iphone, Ipad, Android, Windows or Mac
App is available on Google Play Store and App Store and on www.broncolor.swiss



**download
bronControl
App**

The extensive range of lamps meets every photographer's needs for creative light management. The lamp is the critical element in terms of light quality, but that quality is also influenced by other factors: the shape and coating of the flash tube, the characteristics and surface of the reflectors, the uniformity of illumination along a defined reflector axis, the match between the emission characteristics of the flash and the modelling light, the optimum colour temperature and much more besides. broncolor Pulso L, Pulso G and Unilite lamps all have compact dimensions, a bright halogen modelling light (Pulso L is equipped with multi colour LED), fan cooling, a thermal circuit breaker and plug-in flash tubes. With their integrated broncolor bayonet and release catch the light shapers can be rotated through 360° and changed quickly and safely.

The Picolite small lamps have their own accessories and, with a Pulso adapter, can also be fitted with lightweight broncolor reflectors and other accessories. As one of the first suppliers worldwide, broncolor focused on LED technology and in 2011 introduced the first flash lamp with LED modelling light – the MobilED. Today we offer 90 W LED modelling lights in the new Pulso L lamp head. The colour temperature can be daylight balanced or in warmer tungsten tone. For customised lighting, users can select from a wide range of light shapers with accessories.

A variety of accessories and stands are available for all broncolor lamps to ensure ease of handling.

broncolor lights are supplied with a 5900 K flash tube, halogen or LED modelling lamp, UV-coated 5500 K protective glass (guarantees neutral colour reproduction) and a transparent transport cap.



Pulso L

- 2 Cognition lights
 - manual focusing
 - intuitive control menu
 - OLED display 1.69 inch
 - temperature-controlled fan
 - automatic display orientation
 - freehand bayonet locking system
 - compatible with extensive broncolor light shaper range
 - bicolor LED modelling light*
 - green / magenta setting (tint)*
 - continuous light 2800 to 6800 K (increments of 50)*
 - bidirectional communication with Satos power pack*
- * only with Satos power pack



Pulso L

1600 J: 32.130.00 | 3200 J: 32.131.00

In flash mode

Flash energy	max. 3200 J
Modelling light	LED 90 Watt typical 2,800 or 5,500 K

In continuous light mode

Colour temperature	2800 to 6800 K in 50 K increments
Colour rendering index (CRI)	97+
TLCI	97 (±1)
Dimmability	6 to 100%
Green / Magenta correction (colour cast)	Control range -25 G to +25 G (Limited below 4000 K and above 5000 K)

Other data

Focusing	Manual, infinitely
Length of lamp cable	5 m (16 ft)
Length (Handle to tip of protective glass, rearmost position)	262 mm (10.3 in)
Length (Handle to top of transport protection cap)	285 mm (11.2 in)
Height (Handle to top of housing)	166 mm (6.5 in)
Housing diameter	120 mm (4.7 in)
Weight (incl. lamp cable, without protective cap)	3.5 kg (7.7 lbs)
Stand mount	For bolts 12 mm (0.47 in), 3/8 in thread and bolts 16 mm (0.63 in)
Update option	with lamp cable, connection to Satos generator
Display	OLED 1.69 inch
Use	On tripod Floor installation Ceiling suspension (separately available safety cable 33.173.00 absolutely necessary)
Temperature range of use	-10°C to 40°C
Temperature storage	-10°C to 50°C
Cooling system	Active (temperature controlled fan)
Cognition light	2x top left/right 5 colours (blue, green, purple, yellow, turquoise)
Compatibility	Compatible with broncolor bayonet
Compatibility with broncolor power packs	Satos (without modelling light: Scoro, Grafit, Move, Senso)
Menu language	English, German, French, Korean, Japanese, Italian, Spanish, Chinese simpl., Polish
Approvals	CE, FCC, UKCA, RoHS

Pulso L

Flash tube

34.324.00 3200 J

34.322.00 1600 J



Lamp extension cables

34.156.00: 5m (16.4 ft) for Pulso L

34.157.00: 10 m (32.8 ft) for Pulso L



Protecting glass mat UV-E

34.375.00



Safety cable

33.173.00



Pulso G lamp

- Identical light characteristics of flash tubes and modelling light
- Can be equipped with 1600 J or 3200 J flash tubes
- Plug-in flash tube and protecting glass (with mechanical safety device)
- Integrated knob-operated focusing mechanism with witness marks
- Quick release bracket
- Automatic locking mechanism of the light shaper (rotatable 360°)
- Integrated tilt with high-strength braking mechanism
- Integrated umbrella holder
- Cooling fan and thermal protection
- Automatic adaptation to the respective mains power supply (after exchange of the halogen modelling lamp)

**Pulso G lamp**

1600 J: 32.115.XX | 3200 J: 32.116.XX

Flash energy	max. 3200 J
Modelling light (230 V)	halogen max. 300 W
Length lamp cable	5 m (16 ft)
Dimensions (Ø × l × h)	Ø 13 × 31 × 20 cm (5.1 × 12.2 × 7.8")
Weight (with cable)	3.15 kg (6.9 lbs)
Stand support	for bolts 12 mm, ³ / ₈ " thread and bolts 16 mm, ⁵ / ₈ "

Unilite lamp

- Corresponding emission characteristics of flash tubes and modelling light
- Can be equipped with 1600 J or 3200 J flash tubes
- Plug-in flash tube and protecting glass (with mechanical safety device)
- Quick release bracket
- Automatic locking mechanism of the light shaper (rotatable 360°)
- Integrated tilt with high-strength braking mechanism
- Integrated umbrella holder
- Cooling fan and thermal protection
- Automatic adaptation to the respective mains power supply (after exchange of the halogen modelling lamp)

**Unilite lamp**

1600 J: 32.113.XX | 3200 J: 32.114.XX

Flash energy	max. 3200 J
Modelling light (230 V)	halogen max. 300 W
Length lamp cable	5 m (16 ft)
Dimensions (Ø × l × h)	Ø 12.6 × 30 × 17.5 cm (4.9 × 11.8 × 6.9")
Weight (with cable)	2.8 kg (6.2 lbs)
Stand support	for bolts 12 mm, ³ / ₈ " thread and bolts 16 mm, ⁵ / ₈ "

Accessories**Flash tube 1,600 J**

34.322.00 (for Unilite and Pulso G)

**Flash tube 3,200 J**

34.324.00 (for Unilite and Pulso G)

**Halogen modelling lamp 300 W / 120 V**

34.225.XX Pulso G with fuse 6.3 x 32 3.15 AF

34.234.XX Unilite with fuse 5 x 20 3.15 AF

**Halogen modelling lamp 300 W / 230 V**

34.223.XX Pulso G with fuse 6.3 x 32 2 AF

34.236.XX Unilite with fuse 5 x 20 2 AF

**Protecting glass**

34.336.00

**Protecting glass, mat**

34.337.00



Picolite small lamp

Complete system of specialized light shapers as well as crossover adapter for other broncolor light shapers

- Corresponding emission characteristics of flash tubes and modelling light
- Plug-in flash tube and protecting glass (with mechanical safety device)
- Integrated reflector
- Adapter for own accessories with small dimensions (rotatable 360°)
- Adapter for broncolor light shapers available
- Built-in tilt head with locking lever for an optimal breaking effect
- Integrated umbrella holder
- Cooling fan and thermal protection
- Automatic voltage sensing (halogen modelling lamp must be manually changed)

**Picolite small lamp** | 32.021.00

Flash energy	max. 1600 J
Modelling light (230 V)	halogen max. 150 W
Length lamp cable	3.5 m (11 ft)
Dimensions (Ø × l × h)	Ø 8 × 20.5 × 13.5 cm (3.1 × 8 × 5.3")
Weight (with cable)	1.25 kg (2.7 lbs)
Stand support	for bolts 12 mm, $\frac{3}{8}$ " thread and bolts 16 mm, $\frac{5}{8}$ "

Accessories**Flash tube 1600 J**

34.308.00

**Halogen modelling lamp 150 W / 120 V**

34.202.00

with fuse 3.15 AF

**Halogen modelling lamp 150 W / 230 V**

34.201.00

with fuse 2.0 AF

**Protecting glass for Picolite**

34.332.00

Protecting glass mat for Picolite

34.335.00



Barn door with 4 wings

33.244.00



Pulso adapter

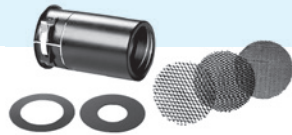
33.501.00

allows to use lightweight reflectors and accessories of the Pulso range



Attachment with 3 honeycomb and 2 aperture masks

33.204.00



Fresnel spot attachment

33.631.00

light angle adjustment range 15 – 35°
incl. mat protecting glass (34.335.00)



Projection attachment

33.641.00

100 mm, with mat protecting glass,
3 aperture masks, 4 integrated templates



Lamp extension cable for Pulso G, Unilite and Picolite

34.151.00 5 m (16 ft)

34.152.00 10 m (33 ft)



Picobox

33.128.00

max. 1600 J

lamp surface 15 × 25 cm (6 × 9.8")
with integrated spring lock



LED F160 CONTINUOUS LIGHT LAMP

The LED F160 is a versatile, high-quality lighting solution with adjustable colour temperatures, a CRI of 97+, and compatibility with broncolor light shapers, bronControl app, and optional DMX adapter box, making it ideal for professional photography and videography both in-studio and on-location.

- Compact dimensions
- Stepless power adjustment
- Colour temperature setting in increments of 50 Kelvin
- Manual focusing
- Absolutely flicker-free – even at high image refresh rates
- Excellent colour rendering index
- Li-Ion battery optionally available
- Constant light intensity over the entire colour temperature range and from lamp to lamp
- New freehand bayonet locking system
- Intuitive control menu
- Display very easy to read, even in bright ambient light
- Automatic display orientation
- Compatible with extensive broncolor light shaper range
- Broad radiation angle of the LEDs ensures an optimal illumination of the reflector

**LED F160** | 61.010.00

Luminous flux	Typically 13800 lumens
Colour temperature	2800 to 6800 K [increments of 50]
Colour rendering index	Typically CRI 97+
Green/magenta correction [colour cast]	Control range -25 to +25 [limitation below 4000 K and above 5000 K]
Dimmability	100 to 6% or f-stop 10 to 6.0
Update option	Via WiFi
Dimensions (Ø × l × h)	Ø 12 × 28.8 × 16.5 cm (4.4 × 11.3 × 6.5")
Weight (with cable)	1.75 kg (3.89 lbs)
Compatibility	Compatible with broncolor bayonet

Accessories**Li-Ion battery 36V XLR kit**

61.020.00 kit

64.011.00 only battery

**DMX adapter box**

64.010.00

**Diffusion attachment (glass)****Safety cable**

33.173.00

**Umbrella reflector for LED F160 Ø 120 mm**

33.170.00

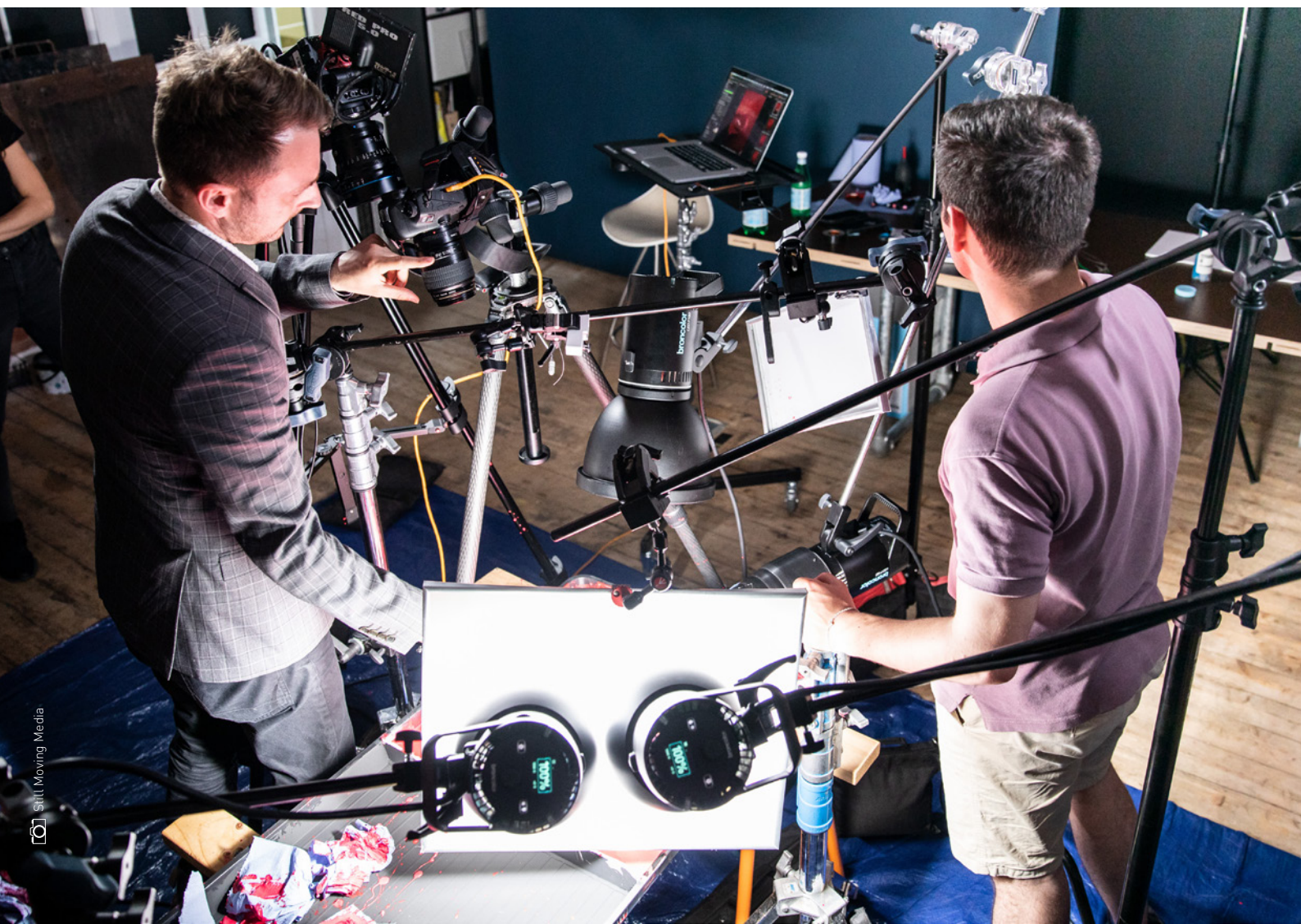


LED F160 Versatility Kit

61.026.00

Battery or main powered, the LED F160 Versatility Kit offers you the possibility to work in studio or on-location. To better shape the light, two reflectors are included: the umbrella reflector and the L40 standard reflector. This kit is easily transportable using the included Flash bag 1.1. Thanks to the powerful 12000 lumens, the adjustable colour temperature, and the manual focusing, you will be ready for every video or photograph task. Ideal for vlog, video interviews or portrait photography.

- 1 LED F160
- 1 L40 standard reflector
- 1 umbrella reflector Ø 120 mm
- 1 Li-Ion battery 36 V XLR
- 1 charger for Li-Ion battery 36 V XLR
- 1 V-Mount stand clamp for Li-Ion battery 36 V XLR
- 1 Flash Bag 1.1
- 1 mains adapter



New light dimensions

It is not just the form and size of Paras that impresses, but above all their unique light quality and phenomenal light output. Decisive for the creative photographer is that a Para is not just a conventional light shaper, but rather an independent lighting system: various sizes of reflector are available; the position of the lamp is always central, on the axis of the reflector; the angle influences the character of the light; the range includes three diffusers with different densities. In addition Paras can be combined with other accessories. Light-thrilled photographers are always finding new combinations and characteristics with the Para system – it offers a never-ending source of inspiration and creativity.

The Big Ones

The Paras are parabolic reflectors; they have 24 segments, covered with a high-gloss, tear-resistant textile reflector material. The reflector openings have diameters of 88, 133, 177 and 222 cm. All reflectors are constructed of aluminium, carbon fibre or fibreglass materials resulting in the matching of lighter total weight and utmost durability. The size also determines the resulting light.

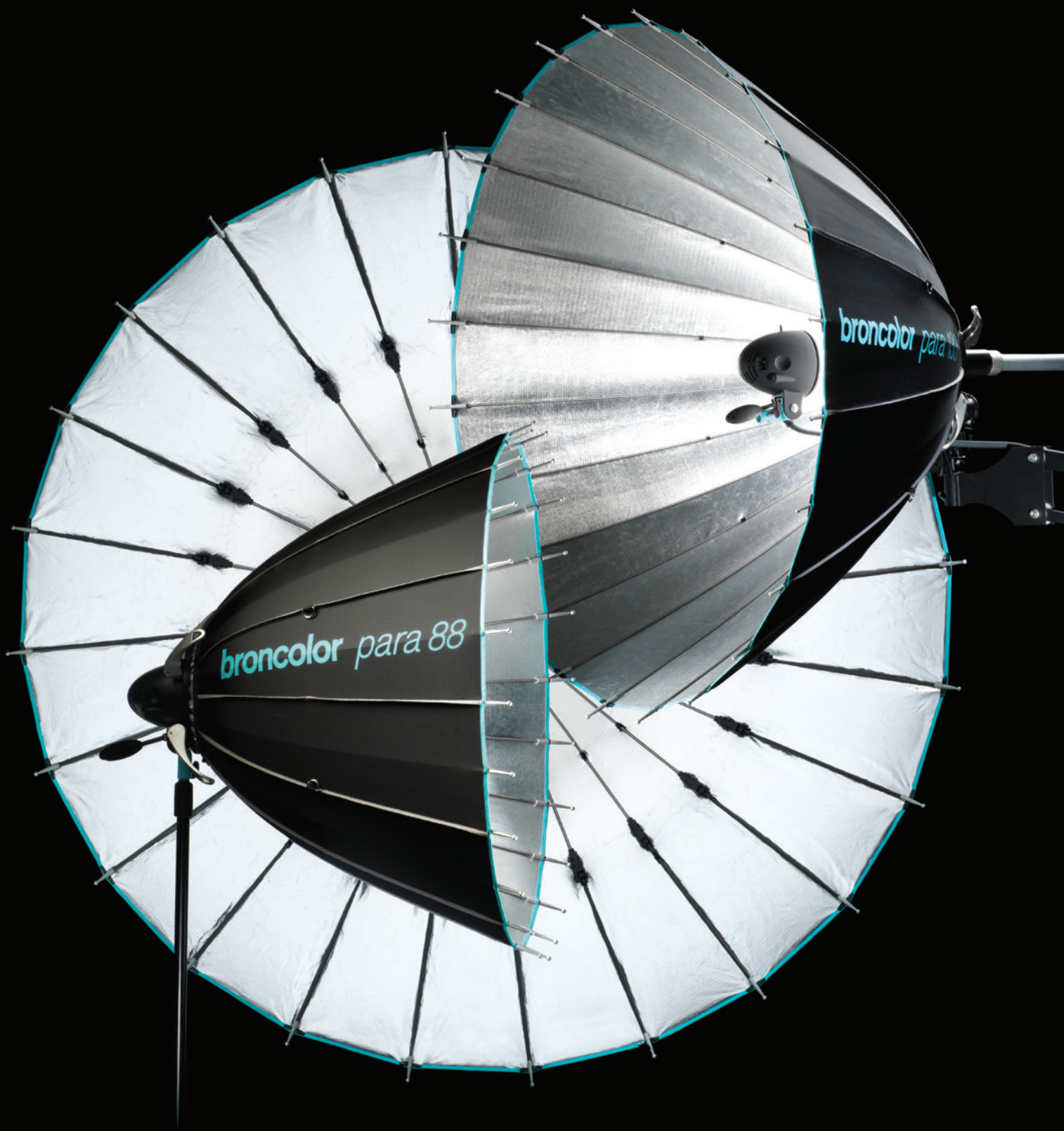
The Para 222 immerses the whole studio in wonderful light and creates the typical Para light, even over distances of 5 – 8 m. The light is identical and homogenous over large spaces allowing the model to move freely and spontaneously. The photographer can even stand directly in front of the light source and vary the distance to the model without influencing the light or throwing a shadow. It can be completely defocused, but without ever seeming “flat”. However, over larger distances it becomes spot-like (harder) earlier, but over short distances provides the entire variation spectrum at an earlier stage.

Light from the Para 177 is gradually approaching that from a giant spot. It is slightly more aggressive (needs a supporting fill-in light

more often), but on the other hand is also more interesting on structures and has greater brilliance in the highlights. This version cannot be fully defocused to the same extent, i.e. the centre of the reflector is never completely black. The residual light does reduce the three-dimensional effect somewhat, but at the same time works to counter a light mood that is too hard. In addition, the 177 has the big advantage that it can be realistically used in smaller studios and over shorter distances.

Beside the spectacular light shapers 177 and 222, the Para family includes the 88 and 133 versions. At 6 kg and 8 kg respectively, they are both lightweights. The super-compact design and patented folding mechanism ensures real convenience and enables setting up in seconds. Para 88s and 133s are even more mobile - perfect for outdoor shootings and smaller studios.

With the broncolor Para family, every shoot is a success. Unbelievable light variability, light, compact, fully compatible with flash and continuous lighting – unlimited possibilities at the highest level.





Allowed max. energy	3200 J resp. 650 W HMI	3200 J resp. 650 W HMI
F-stop at 2 m / 6 1/2 ft (10 m / 33 ft) distance	64 ⁹ / ₁₀ [22 ⁸ / ₁₀]	focused: 90 [22] , defocused: 64 [11]
Inside coating	silver	silver
Dimensions (without stand)	open Ø 85 × 64 cm [34 × 24 in] closed Ø 20 cm × 83 cm [8 × 33 in]	open with focusing system: Ø 85 cm × 107 cm [33 × 42 in] closed with focusing system: Ø 32 × 107 cm [13 × 42 in]
Weight	2.8 kg [6.2 lbs] without case	5,5 kg [12,1 lbs] without case
Scope of delivery	incl. Flash bag 2	1 Para 88 reflector, 1 focusing tube F88, 1 focusing device for Para 88 / 133 with tilt head and safety cable, 4 suspension rope, 1 Flash Bag 2 without inlay

Para 133 reflector | 33.550.00**Para 133 Kit without adapter** | 33.550.03

Allowed max. energy	3200 J resp. 800 W HMI	3200 J resp. 800 W HMI
F-stop at 2 m / 6 1/2 ft (10 m / 33 ft distance)	focused: 64 ⁹ / ₁₀ [22 ⁸ / ₁₀]	focused: 90 ⁴ / ₁₀ [22 ⁶ / ₁₀]
Inside coating	silver	silver
Dimensions (without stand)	open (without stand) Ø 120 × 77 cm [47 × 30 in] closed Ø 102 × 20 cm [40 × 8 in]	open (without stand) Ø 120 × 77 cm [47 × 30 in] closed Ø 102 × 20 cm [40 × 8 in]
Weight	6.7 kg [14.7 lbs]	10.5 kg [23.1 lbs]
Scope of delivery	incl. Flash bag 2	Para 133 reflector, 1 focusing tube F133, 1 focusing device for Para 88 / 133 with tilt head and safety cable, 4 suspension rope, 1 Flash Bag 2 without inlay

Para 177 kit | 33.551.03**Para 222 kit** | 33.552.03

Allowed max. energy	3200 J resp. 1600 W HMI	3200 J resp. 1600 W HMI
F-stop at 2 m / 6 1/2 ft (10 m / 33 ft distance)	focused: 128 ³ / ₁₀ [45 ⁵ / ₁₀]	focused: 128 ³ / ₁₀ [45 ⁵ / ₁₀]
Inside coating	silver	silver
Dimensions (without stand)	open Ø 170 cm × 95 cm [66.9 × 37.4 in] closed Ø 40 cm × 95 cm [15.7 × 37.4 in]	open Ø 170 cm × 95 cm [66.9 × 37.4 in] closed Ø 40 cm × 95 cm [15.7 × 37.4 in]
Weight	9.5 kg [20.9 lbs]	11.5 kg [25.4 lbs]
Scope of delivery	Para 177, 1 focusing tube F177, 1 levelling rod with tilt head and safety cable, 4 suspension rope, 1 trolley bag (foldable)	Para 222, 1 focusing tube F222, 1 levelling rod with tilt head and safety cable, 4 suspension rope, 1 trolley bag (foldable)



Heat Resistant (HR) versions

for the use with continuous lighting at up to a maximum of 2000 W output.

Para 88 HR reflector | 33.482.04

Para 88 HR Kit | 33.483.06

Para 133 HR reflector | 33.550.04

Para 133 HR Kit | 33.550.06

Allowed max. energy	3200 J rsp. 2000 W HMI	3200 J rsp. 2000 W HMI
F-stop at 2 m / 6 1/2 ft (10 m / 33 ft) distance	64 ⁹ / ₁₀ [22 ⁸ / ₁₀]	focused: 90 ⁴ / ₁₀ [22 ⁶ / ₁₀]
Inside coating	silver	silver
Dimensions (without stand)	open Ø 85 × 64 cm (34 × 24 in) closed Ø 20 cm × 83 cm (8 × 33 in)	open with focusing system: Ø 120 cm × 77 cm (47 × 30 in) closed with focusing system: Ø 102 × 20 cm (40 × 8 in)
Weight	2.8 kg (6.2 lbs) without case	3.3 kg (6.4 lbs) without case
Scope of delivery	Para 88 HR reflector; 4 suspension cable for Para, flash bag 2 (without inlay), 1 mounting instructions	Para 133 HR reflector; 4 suspension cable for Para, flash bag 2 (without inlay), 1 mounting instructions

Accessories

Focusing tube F

Para 88: 33.703.00
Para 133: 33.705.00
Para 177: 33.707.00
Para 222: 33.708.00



Adapter P

33.489.00
for standard broncolor mount



Focusing device Para with tilt head, suspension rope

33.700.00
33.504.00 only for focusing device



Adapter Profoto

33.489.03



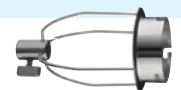
Tilt head with crank handle for Para

33.477.00
Recommended when using
light devices over 5 kg (11 lbs).



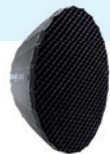
Adapter K5600

33.489.05 for focusing system for Para 88 / 133
33.489.08 for focusing system for Para 177 / 222



Light grid 40°

Para 88: 33.222.00
Para 133: 33.233.00
Para 177: 33.234.00
Para 220: 33.235.00



Adapter Ring flash

33.489.04



Diffuser No. 1 (low*)

Para 88: 33.472.00 / Para 133: 33.293.00
Para 177: 33.287.00 / Para 222: 33.290.00

Diffuser No. 2 (medium*)

Para 88: 33.473.00 / Para 133: 33.294.00
Para 177: 33.288.00 / Para 222: 33.291.00

Diffuser No. 3 (high*)

Para 88: 33.474.00 / Para 133: 33.295.00
Para 177: 33.289.00 / Para 222: 33.292.00



Universal adapter to non-broncolor lamps

33.489.06



*Diffusion degree

The slightly textured open reflectors are characterised by homogeneous light distribution, although a controlled centre emphasis can be achieved using focusable Pulso G and L lamps.

The light angle of each open reflector is apparent from its model designation, optical attachments (such as projection attachment) offer a variable coverage angle.

Standard reflector P70

33.107.00

optimised for Pulso G
and Unilite lamps
Ø 23.2 × 18.4 cm (9.1 × 7.2")



Honeycomb grids for P70

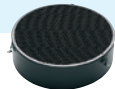
33.207.00

set of 3 pieces (fine, medium, coarse)



Honeycomb grid extremely narrow for P70

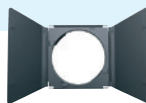
33.202.00



Barn door for P70

33.227.00

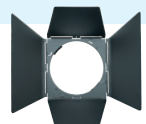
with 2 wings, with 2 clips to fix diffusers,
filters and masks



Barn door for P70

33.247.00

with 4 wings, with 2 clips to fix diffusers,
filters and masks



Colour filters for P70

33.307.00

set of 12 pieces



Grey and correcting filters for P70

33.317.00

set of 12 pieces



Opal diffusers for P70

33.327.00

set of 12 pieces



Standard reflector P65

33.106.00

optimised for Pulso-Twin
and Pulso 8 lamps
Ø 29.5 × 24 cm (11.6 × 9.4 in)



Narrow angle reflector P45

33.104.00

optimised for Pulso G
and Unilite lamps
Ø 29.5 × 35.3 cm (11.6 × 13.9 in)



PAR Reflector

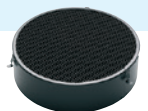
33.113.00

light angle 48°, with protecting glass UV, mat
Ø 29.5 × 18.3 cm (11.6 × 7.2 in)



Honeycomb grid extremely narrow for P65 and P45

33.211.00



Honeycomb grids for P65, P45 and PAR

33.206.00

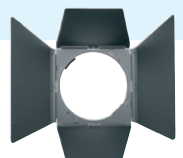
set of 3 pieces (fine, medium, coarse)



Barn door with 4 wings for P65, P45 and PAR

33.246.00

with 2 clips to fix diffusers,
filters and masks



Colour filters for P65, P45, PAR and background reflector

33.306.00

set of 12 pieces



Standard reflector L40

33.115.00

optimized for Siros

400 and Siros 800

Ø 182 × 118 cm (71.6 × 46.4 in)

**Honeycomb grids for L40**

33.194.00

set of 3 pieces (fine, medium, coarse)

**Background reflector**

33.114.00

Ø 12.7/19 × 30.3 cm (5 / 7.5 × 11.8 in)

**Softlight reflector P-Soft**

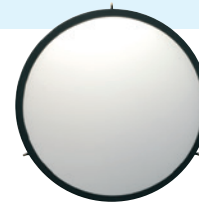
33.110.00

silver inside coating

Ø 51.8 × 19.6 cm (20.4 × 7.7 in)

**Diffuser filter for Softlight reflector P-Soft and Beauty Dish**

33.310.00

**Beauty Dish reflector**

33.111.00

with textile diffuser,

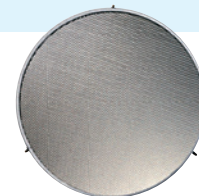
white inside coating,

incl. bag (36.516.00)

Ø 51.8 × 19.6 cm (20.4 × 7.7 in)

**Honeycomb grid for Softlight reflector P-Soft and Beauty Dish**

33.210.00

**P-Travel reflector**

33.103.00

light angle 55°

Ø 19.5 × 9 cm (7.7 × 3.5 in)

**Wide angle reflector P120**

33.112.00

Ø 22 × 4.4 cm (8.6 × 1.7 in)

**Conical snoot**

33.120.00

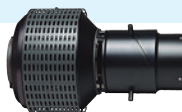
Ø 13.8 / 7.6 × 26.25 cm (5.4 / 2.9 × 10.3 in)

**Spot attachment**

33.640.00

with mat protecting glass,

6 aperture masks, 1 gobo holder



The broncolor Softboxes are optimised light shapers in 10 different shapes and sizes. Rectangular, square, octagonal and as a strip. These quality, high-performance light shapers extend your flash system and offer countless additional lighting effects. The two diffusers included in the scope of supply enable a soft light with very uniform distribution.

With optional light grids and additional diffusers, light control can be made even more precise. The highly-effective internal coating ensures a high efficiency. Coloured markings on the tensioning rods and on the Speed ring enable simple, quick erection and dismantling. With appropriate Speedrings, Softboxes can also be used with flash units from other manufacturers.

Softbox

33.560.00	35	x	60	cm	1.1	x	2	ft
33.561.00	60	x	60	cm	2	x	2	ft
33.562.00	60	x	100	cm	2	x	3.3	ft
33.563.00	100	x	100	cm	3.3	x	3.3	ft
33.564.00	30	x	120	cm	1	x	3.9	ft
33.565.00	90	x	120	cm	3	x	3.9	ft
33.567.00	30	x	180	cm	1	x	5.9	ft
33.566.00	120	x	180	cm	3.9	x	5.9	ft

Additional front diffuser for Softbox

33.590.00	35	x	60	cm	1.1	x	2	ft
33.591.00	60	x	60	cm	2	x	2	ft
33.592.00	60	x	100	cm	2	x	3.3	ft
33.593.00	100	x	100	cm	3.3	x	3.3	ft
33.594.00	30	x	120	cm	1	x	3.9	ft
33.595.00	90	x	120	cm	3	x	3.9	ft
33.599.00	30	x	180	cm	1	x	5.9	ft
33.596.00	120	x	180	cm	3.9	x	5.9	ft

Strip mask for Softbox

33.610.00	30	x	120	cm	1	x	3.9	ft
33.611.00	30	x	180	cm	1	x	5.9	ft

Octabox

33.600.00	Ø 75 cm	2.5 ft
33.601.00	Ø 150 cm	4.9 ft

Additional diffuser for Octabox

33.597.00	Ø 75 cm	2.5 ft
33.598.00	Ø 150 cm	4.9 ft

Light grid 40° for Octabox

33.587.00	Ø 75 cm	2.5 ft
33.588.00	Ø 150 cm	4.9 ft



Light grid 40° for Softbox

33.580.00	35	x	60	cm	1.1	x	2	ft
33.581.00	60	x	60	cm	2	x	2	ft
33.582.00	60	x	100	cm	2	x	3.3	ft
33.583.00	100	x	100	cm	3.3	x	3.3	ft
33.584.00	30	x	120	cm	1	x	3.9	ft
33.585.00	90	x	120	cm	3	x	3.9	ft
33.567.00	30	x	180	cm	1	x	5.9	ft
33.586.00	120	x	180	cm	3.9	x	5.9	ft



Beautybox 65

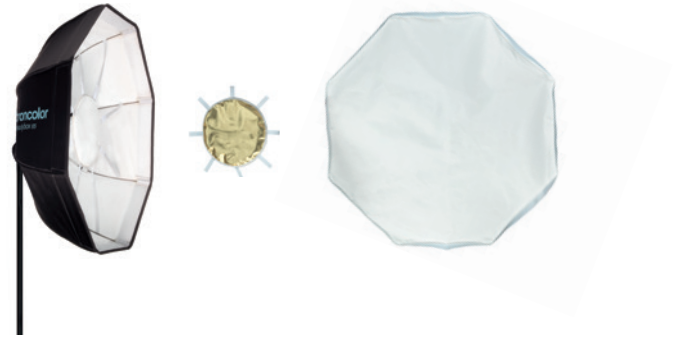
33.568.00 including one double-sided counter reflector (gold/white) and one diffuser

Light grid 40° for Beautybox 65

33.579.00 Ø 65 cm (2.1 ft)

Adapter rings for Softboxes, Octaboxes and Beautybox 65

33.401.00 broncolor
 33.401.01 Profoto
 33.401.03 Elinchrom
 33.401.04 Bowens
 33.401.07 Canon/Nikon

**The classic in lighting composition**

broncolor Umbrellas are produced in two sizes and three different versions. Silver, white and translucent, and 85 cm or 105 cm in diameter.

Umbrella silver

33.574.00: Ø 85 cm (2.8 ft)
 33.570.00: Ø 105 cm (3.4 ft)

**Umbrella transparent**

33.575.00: Ø 85 cm (2.8 ft)
 33.572.00: Ø 105 cm (3.4 ft)

**Umbrella white**

33.573.00: Ø 85 cm (2.8 ft)
 33.571.00: Ø 105 cm (3.4 ft)

**Focus 110 umbrella**

33.576.00

**Umbrella reflector for Pulso G and Unilite lamps**

33.496.00



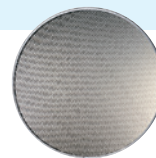


broncolor Flooter

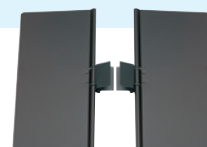
32.431.00
 max. 6400 J
 f-stop at 2 m (6 ½ ft) distance,
 100 ISO with 3200 J: (15°) 90 ²/₁₀
 24 × 46 × 52 cm (9.4 × 18 × 20.5 in)
 light angle adjustment range
 15° – 70°,
 incl. fixing bracket, Fresnel lens

**Honeycomb grid for broncolor Flooter**

33.208.00

**Barn doors for broncolor Flooter**

33.225.00
 set of 2 pieces

**UV attachment**

33.626.00
 Ø 18.3 x 14.5 cm (Ø7.2 x 5.7") 0.74 kg (1.6 lb)
 light angle approx. 70°

**Litepipe P**

32.452.00
 360° beam angle without counter-reflector
 included reflector foils 19 cm wide and 27 cm wide

32.459.00 Reflector foil for Litepipe P

**Balloon**

33.161.00
 max. 3200 J
 for Pulso G and Unilite lamps, monolights,
 acrylic glass sphere, opal, Ø 50 cm (20 in),
 with black plastic socket and Pulso bayonet



Ringflash C

- Halogen modelling light 200 W
- A honeycomb set (3 pieces) is available for Ringflash C
- High-strength UV-coated flash tube (3200 J)
- Powerful fan cooling and integrated UV-filter
- Operation possible on all mains power supplies worldwide

**Ringflash C** | 32.462.XX

Flash energy	max. 3200 J
Modelling light (230 V)	200 W halogen: 10 × 20 W / 24 V
F-stop at 2 m (6 ½ ft), 100 ISO	45 1/10 (3200 J) with soft reflector: 45 6/10 (3200 J)
Cooling	stabilised with 2 fans
Dimensions with support (Ø × h × d)	23.1 × 28.6 × 18 cm (9.1 × 11.3 × 7.1 in)
Weight with cable 5 m (16 ft)	2.7 kg (6 lbs)

Accessories**Halogen modelling lamp**

34.216.00 (230 V): 20 W / 24 V
 34.217.00 (120 V): 20 W / 12 V
 for Ringflash C

**Honeycomb grid for Ringflash C**

33.219.00
 set of 3 pieces (fine, medium, coarse)

**Power reflector for Ringflash C**

33.125.00
 slightly satiny inner surface coating

**Soft reflector for Ringflash C**

33.123.00
 silver inside coating
 incl. UV-coated protecting glass

**Beauty reflector for Ringflash C**

33.124.00
 white inside coating
 incl. UV-coated protecting glass

**Conversion set for Ringflash C**

36.125.00
 for conversion to Ringflash P

**Conversion set for Ringflash P**

36.126.00
 with power reflector C for Ringflash
 for conversion to Ringflash C

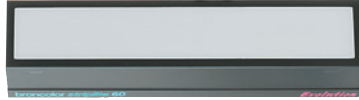
**Litestick**

32.451.00 (5500 K*)
 max. 3200 J
 5,5 × 57 cm
 Blende in 2 m Abstand 100 ISO: 45,7 (mit Reflektor), 32 7/10
 (ohne Reflektor) inkl. Blitzröhre, abnehmbarer Reflektor,
 Stativaufnahme, Leuchtenkabel 3,5 m



Striplite 60 Evolution

32.301.XX (5500 K)
Flash energy max. 3200 J
f-stop at 2 m (6 ½ ft) distance, 100 ISO: 32 1/10
with Plexiglas diffuser, interchangeable tilt head,
fan, 2 flash tubes, 10 modelling lamps 20 W,
cable 5 m (16 ft)
Dimensions (l × w × h) 58 × 12 × 13 cm (23 × 5 × 5 in)
Weight 3.6 kg (8 lbs)

**Barn doors for Striplite 60 Evolution**

33.228.00

**Plexiglas cap mat, for Striplite 60 Evolution**

33.272.00

**Boxlite 40**

32.341.XX (5500 K)
Flash energy max. 3200 J
f-stop at 2 m (6 ½ ft) distance,
100 ISO: 22 3/10 (1600 J)
with 2 flash tubes, 4 modelling lamps,
quick change head, cable 5 m (16 ft)
Dimensions (l × w × h) 30 × 40 × 15 cm (11.8 × 15.7 × 5.9 in)
(measurements without quick change head)
Weight 4.1 kg (9 lbs)

**Sunlite Set for Pulso G / Unilite**

33.162.00 (5500 K)
max. 3200 J, f-stop at 2 m
(6 ½ ft) distance, 100 ISO: 22 8/10
comprises:
1 U-shaped special flash tube,
1 clear protecting glass,
1 mat protecting glass,
1 barn door with 4 wings,
for effects similar to UV-sunlight



RFS 3

Lithium battery	3.7 V DC , 850mAh non-user-replaceable rechargeable via USB-C
Charging time	≈ 2 hours
Standby time	≈ 7 days
Transmission range (approx.)	0-100 m
Frequency	2.4 GHz
Studio address setting range	1-99
Lamp address setting range	1-40
Flash triggering	Via integrated hotshoe
Dimensions	4.1 x 4.7 x 3.9 cm (1.61 x 1.85 x 1.54 in)
Net weight	48 g (0.106 lbs)



for Canon cameras
for Nikon cameras
for Sony cameras
for Fujifilm cameras
for Leica cameras

RFS 3 C | 36.164.00
RFS 3 N | 36.165.00
RFS 3 S | 36.166.00
RFS 3 F | 36.167.00
RFS 3 L | 36.168.00

RFS 2.1

Number of work stations	99
Number of frequency channels	40
Frequency	2.4 GHz
Transmission time (transmitter to receiver)	0.425 µs
Operating distance outdoors	up to 200 m (656 ft)
Operating distance in closed rooms	up to 50 m (164 ft)
Max. trigger sequence per second	100
Power supply	RFS 2 transmitter: 3 V CR2450 battery RFS 2 receiver: USB power supplier
Dimensions (l × w × h)	6.8 × 3.9 × 2.5 cm (2.7 × 1.5 × 1 in)
Weight (incl. battery)	43 g (0.09 lb)



RFS 2.1 transmitter kit | 36.133.00

1 transceiver, 1 lithium button cell CR 2450, 1 sync cable for camera,
1 sheath

RFS 2.1 receiver kit | 36.134.00

1 transceiver, 1 base plate, 1 lithium button cell CR 2450,
1 sync cable for camera,
1 sync cable for flash unit, 1 USB power supplier for receiver-operation
(incl. supplier), 1 car charging cable, 1 USB cable, 1 sheath

RFS 2.1 transmitter / receiver kit | 36.135.00

2 transceivers, 1 base plate, 1 lithium button cell CR 2450,
1 sync cable for camera,
1 sync cable for flash unit, 1 USB power supplier for
receiver-operation (incl. supplier), 1 car charging cable,
1 USB cable, 2 sheaths

HotShoe Adapter 2 in 1

36.137.00

Combines any two triggers from this list: broncolor
RFS, RFS 2, RFS 2.1, PocketWizard PlusX,
Plus III and MultiMax (without any delay)



Senior stand AC

35.110.00
air cushioned (AC), with 2 height extensions, adjustable from 110 to 260 cm (3.6 – 8.1 ft), and 3/8 in threaded bolt 16 mm, weight 2.1 kg (4.6 lbs)



XXL stand AC

35.114.00
air cushioned (AC), with 3 height extensions as well as stand casters, adjustable from 144 – 455 cm (4.7 – 14.9 ft), stand mount 28 mm (1.1 in), 3/8 in threaded bolt 16 mm, weight 8 kg (17.6 lbs)



Junior stand AC

35.100.00
air cushioned (AC), with 2 height extensions, adjustable from 90 to 250 cm (3 – 8 ft), and 3/8 in threaded bolt 16 mm, weight 1.25 kg (2.7 lbs)



Bolt

38989.00
Ø 16 mm 3/8 in and 1/4 in internal thread



Bag for 3 senior stands

36.552.00
Ø 22 cm (0.7ft), length: 101 cm (3.1 ft)



all
stands

broncolor lamps and monolights are supplied with flash tube 5900 K, halogen modelling lamp, UV-coated protecting glass 5500 K (guarantees neutral colour reproduction) and transparent protection cap.
You will find all the spare parts on www.broncolor.swiss

Siros 400S / 800S

Flash tube 400/800 J for Siros S

34.360.00



Halogen modelling lamp 300 W / 120 V

34.260.00



Protecting glass mat

34.369.00

5900 K



Siros 400L / 800L

Flash tube 400/800 J for Siros L

34.362.00



Protecting glass mat

34.369.00

5900 K



Pulso L

Flash tube

34.324.00 3200 J

34.322.00 1600 J



Protecting glass mat UV-E

34.375.00



Unilite, Pulso G

Flash tube 1600 J

34.322.00



Flash tube 3200 J

34.324.00



Halogen modelling lamp 300 W / 120 V

34.225.XX Pulso G

34.234.XX Unilite

with fuse



Protecting glass UV-E

34.336.00



Protecting glass, mat UV-E

34.337.00



Sunlite

Flash tube 3200J / 5900K

34.346.00



Attention

To avoid damage to your broncolor lamp and to ensure consistent light characteristics, only use original broncolor flash tubes.

Faults that occur due to the use of third-party accessories are excluded from the factory guarantee.

We assume no liability for damage caused by the use of third-party accessories.

Picolite**Flash tube 1600 J**

34.308.00

**Halogen modelling lamp 150 W / 230 V (Picolite)**

34.201.00

with fuse 2.0 AF

**Halogen modelling lamp 150 W / 120 V (Picolite)**

34.202.00

with fuse 3.15 AF

**Protecting glass**

34.332.00

**Protecting glass, mat**

34.335.00

**Ringflash C / Striplite****Halogen modelling lamp 20 W / 24 V**

34.216.00

230 V

**Halogen modelling lamp 20 W / 12 V**

34.217.00

120 V

**Boxlite 40****Modelling lamp 40 W**

34.211.XX

**Flash tube 800 J / 5900 K**

34.334.00



all
modelling
lamps

all
flash
tubes

all
protecting
glass

Beauty Dish bag

36.516.00

for Beauty Dish and P-Soft

Dimensions: 54 × 22 cm (21.2 × 8.5 in)



Flash bag 1.1

36.536.00

for Siros

Weight: 1.35 kg (2.2 lbs)

Dimensions:

45 × 20 × 23 cm (17.7 × 7.8 × 9 in)



Outdoor trolley backpack for Siros L

36.524.00

Weight: 5 kg (11 lbs)

Dimensions: 56 × 41 × 27 cm (22 × 16.1 × 10.6 in)



Flash bag 2

36.532.00 for two Siros S

36.532.01 without inlay, for Para 88 and Para 133

Weight: 3.5 kg (6.6 lbs)

Dimensions: 106 × 20 × 24 cm (41.7 × 7.8 × 9.4 in)



Accessory bag

36.535.00

for Siros

Weight: 1.25 kg (1.25 lbs)

Dimensions: 102 × 14 × 20 cm

(40.1 × 5.5 × 7.8 in)



Flash bag 3

36.533.00

for Siros

Weight: 4.5 kg (8.8 lbs)

Dimensions: 103 × 21 × 37 cm

(40.5 × 8.2 × 14.5 in)



Trolley bag (foldable)

36.521.00

for Para 177 / 222

Dimensions: 123 × 40 × 42 cm

(48.4 × 15.7 × 16.5 in)

Weight: 2.55 kg (4.4 lbs)



all
bags

Sync cable

34.111.00: 5 m (16 ft)

34.112.00: 10 m (32 ft)



Lamp extension cables

34.151.00: 5 m (16.4 ft) for Pulso G, Unilite and Picolite

34.152.00: 10 m (16 ft) for Pulso G, Unilite and Picolite

34.156.00: 5m (16.4 ft) for Pulso L

34.157.00: 10 m (32.8 ft) for Pulso L



all
cables



Scope D50 | UV/IR

The Scope D50 version for multispectral photography.

Capture your RTI images with ultraviolet (UV), infrared (IR) and visible light.

- 48 x white LED
- colour temperature 5000 K \pm 75 K
- 1500 lm max.
- CRI > 90
- 48 x LED UV (390 – 395 nm) max. 1600 mW
- 48 x LED IR (920 – 960 nm) max. 1600 mW



Scope D50 | 82.110.00

Scope D50 UV/IR | 82.130.00

Field of application	Product Photography, Reproductions, Surface Visualisations	
Dome dimensions (incl. camera mount and stand holder)	Length, width, height: 59 x 50 x 48 cm (23.2 in x 19.7 in x 18.9 in)	
Possible ground clearance (adjustable feet and/or supporting feet)	1.5 – 6.0 cm (0.59 in – 2.36 in) and 10.5 – 15.0 cm (4.13 in – 5.90 in)	
Dimensions of supporting feet	(Length x Ø): 9.0 x 3.0 cm (3.5 in x 1.2 in)	
Aperture for camera lens	12.0 cm (4.7 in)	
Inner diameter of dome	42.5 cm (16.7 in)	
Weight of dome (incl. camera mount and stand holder)	8.8 kg (19.4 lbs)	
Weight of supporting feet	4 x 0.13 kg = 0.52 kg (4 x 0.29 lbs = 1.15 lbs)	
Weight of adjustable feet	4 x 0.16 kg = 0.64 kg (4 x 0.35 lbs = 1.41 lbs)	
Weight of transport case	23.4 kg (51.6 lbs) Lamp outlets	
Materials	Steel, Aluminium, ABS plastic (extra matt coating on the inside ensuring minimal reflections)	
Supply voltage	85...260 VAC, 47...63 Hz	
Power input	< 100 W	
Ambient temperature	0 – 50°C (32 – 122°F)	
Ambient humidity	0 – 85% (non-condensing)	
Storage temperature	-10 – 70°C (14 – 158°F)	
LED control	Remote (WiFi, USB) Trigger input (3.5 mm jack plug) Local control (touch display)	
Speed	Light changes (from one LED to the next): 5 – 70 ms (depending on configuration) in 1/10 or full f-stop intervals. Choice of joules or percent for LCD display	
White LED	48 LED	48 LED
	Colour temp. 5000 K \pm 75 K	Colour temp. 5000 K \pm 75 K
	1000 lm max. (single LED operation) 1500 lm max. (all LED simultaneously)	1000 lm max. (single LED operation) 1500 lm max. (all LED simultaneously)
Ultraviolet LED	Wavelength 390 – 395 nm Radiant power 1150 mW (single LED operation) Radiant power 1600 mW (all LED simultaneously)	
Infrared LED	48 LED Wavelength 920 – 960 nm Radiant power 1150 mW (single LED operation) Radiant power 1600 mW (all LED simultaneously)	
Recommended lenses	fixed-focal-length macro lenses 50 – 105 mm (in general, other lenses can be used, however, the maximum picture angle must not be exceeded)	
Max. depth of insertion of lens	7.0 cm (2.75 in)	
Max. picture angle	80° at a depth of insertion of 0 cm (0 in) 115° at a depth of insertion of 7.0 cm (2.75 in)	
Max. diameter of object	32.0 cm (12.59 in)	
Max. edge length of square object	22.0 cm (8.66 in)	
Max. distance between lower edge of dome and object surface	15.0 cm (5.90 in)	
WiFi	802.11 bgn	
Display / Operation	2.8 in Display, 240 x 320 pixel, 262144 colours T Touch Control	
International Protection	IP20	
System recommendations for TRUVIS Authentica Creator	Windows 10, Mac OS 10.11 or higher	

Lighting solutions for cultural heritage photography - Scope D50

The portable Reflectance Transformation Imaging (RTI) solution makes even the smallest surface detail interactively visible.

The object is illuminated from 48 different angles and the software creates a two-dimensional surface model to authentically reproduce the shape, colour and texture of the surface. Optionally in the visual, ultraviolet or infrared spectral range.



Accessories

Battery kit for Scope D50

82.160.00



Li-Ion battery 36 V XLR

64.011.00

Dimensions: 13 x 9.5 x 6 cm (5.12 in x 3.74 in x 2.36 in)

Weight: 0.650 kg (1.43 lbs)



Charger for Li-Ion battery 36 V XLR

64.012.00



Battery cable for Scope D50

82.218.00



Download Truvis Authentica Creator

broncolor global and local ambassadors

Our brand ambassadors are outstanding personalities in the photography and film industry who report on the industry in general, the use of our broncolor products and their respective genre from their unique perspective. With their stories, these ambassadors bring the world of photography in connection with broncolor products and their expertise closer in an impressive way. In this way, they serve as a source of inspiration for broncolor customers and photo enthusiasts worldwide who are always looking to develop and challenge themselves.

There are both global and local ambassadors.

The latter represent broncolor within their respective countries, while global ambassadors act as international representatives, showcasing broncolor values and innovations on a global stage.

**all
ambassadors**



David Lund

www.davidlund.co.uk



Sails Chong

www.instagram.com/sails_chong



Ray Demski



www.raydemski.com



Martha Suhermann



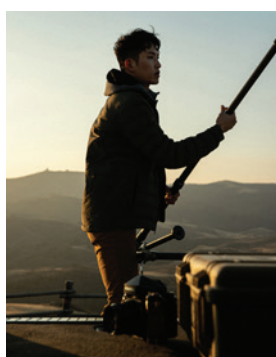
www.marthasuherman.com



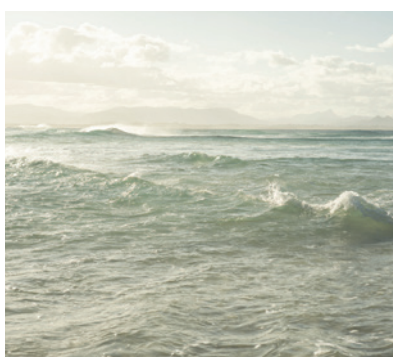
Yannick de Bakongo



www.debakongo.com



Kyungbum Kim



www.studiooosa.com



Dariane Sanche



www.dssanchez.com



Antonis Engrafou



www.antonisengrafou.com



Jeroen Nieuwhuis



www.jeroennieuwhuis.nl

broncolor Workshops and education programme

broncolor loves light.
And broncolor staff loves to talk about light.

This is why we constantly travel around the planet sharing our passion. In cooperation with broncolor distributors we organise seminars and workshops about lighting, we show the latest innovations and products and the best way to integrate them in your creative process.

When travelling was difficult, we started broadcasting webinars from the broncolor headquarters. The focus was and remains the same - we always want to proudly show you our latest innovations and want to help you to produce the best results with our lights. broncolor is sincerely committed to

contributing to knowledge retention in the global photography industry.

Make sure you never miss one of our great seminars, webinars or workshops. Sign up for the newsletter of your local broncolor partner and also subscribe to the official broncolor newsletter.

With the broncolor education programme, we provide valuable resources to help educators and students to learn in an interactive and engaging way, and we provide equipment priced specially for education to make it even easier to enter the family of broncolor users.



broncolor's HOW TO – Learning with broncolor was never easier

"How To" explains very simply the numerous possibilities and applications of broncolor light modifiers. In each case the concept consists of a beautiful picture, the lighting set-up, visualised with a graphic diagram, the camera settings, and an explanation of the exposure.

<https://broncolor.swiss/learn>

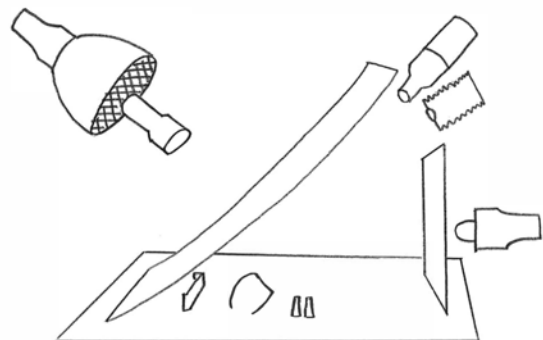
All the examples can be called up on our website under "How To". You can either let yourself be inspired by the examples or, very specifically, search for examples with the appropriate light modifier. Several of the "How To" examples have been filmed to give an even more detailed insight into how that particular

image was created. The videos can be watched on the website, or on our Youtube channel.

broncolor publishes new examples at frequent intervals. Follow us on social media, such as Facebook or X; you will then be notified automatically when a new example is available.

Finally, check out and download for free the e-book "lighting school", where 50 photographs of a simple egg (and the corresponding BTS shot) explain the light characteristics of all broncolor light shapers:

<https://lp.broncolor.swiss/lightingschool>



Compatibility, getting started, expansion

The broncolor modular system includes monolights, power packs, lamps and accessories, which are mutually compatible. This facilitates the start with the broncolor system, as you will always be able to enlarge it step by step and adapt it to your individual requirements. Combination with earlier broncolor equipment is virtually unrestricted.

The broncolor system

Output, easy to handle, microprocessor control system, and quick flash series – no matter what criterion makes you buy a flash system. Amongst the broncolor system you will find the units completely in line with your lighting requirements. They let you advance into new applications and succeed with motion shots. Various lamps and a wide selection of reflectors, area lights and accessories give you ample latitude in your visions of lighting and creativity.

Warranty

All broncolor equipment is characterised by high quality standards. All equipment – with the exception of flash tubes, modelling lamps, rechargeable batteries, textiles and parts subject to wear – carry a 2-year warranty.

Special brochures

Please ask your broncolor representative for detailed special brochures relating to individual broncolor products and services.

**additional
information**

**all
segment
brochures**



Interactive knowledge base - Get the precise information you are looking for

Find the required information in seconds, thanks to our interactive knowledge base that acts as a centralised self-service hub for all questions related to broncolor products.

broncolor's interactive knowledge base is an additional feature that helps photographers to deepen their understanding of broncolor lighting systems.

A user-friendly interface allows them to quickly find relevant information such as operating instructions and manuals.

By using keywords, users can search for specific content, while the interactivity of the

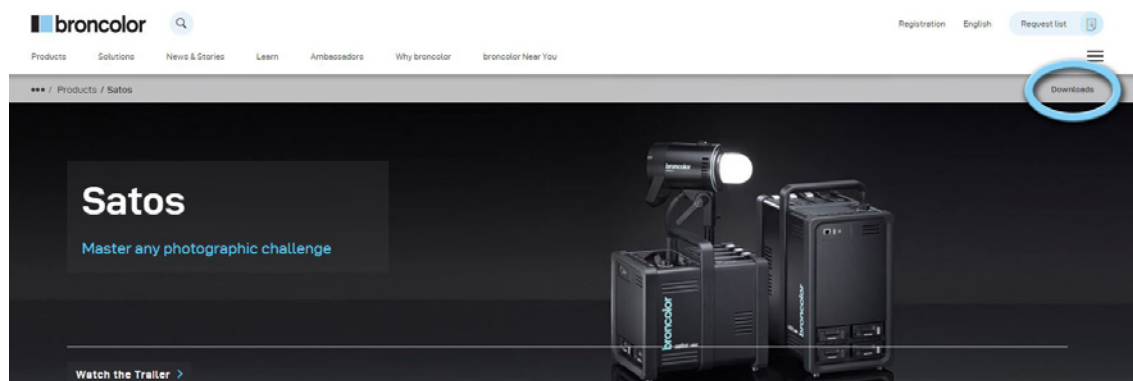
database allows them to give and receive feedback directly. Thanks to regular updates, all product features and firmware updates are displayed.

The knowledge base can be displayed in English, German or French.

<https://broncolor.swiss/help>

Download section on product subpages

By clicking on the “Download” link located in the top right corner of a product’s subpage, you will find additional useful information such as: datasheets, brochures, declarations of conformity, compatibility charts, battery and care and more.



A way to help you tailor your own lighting solution

We have prepared some product bundles for you to help you select and learn about specific products in these three areas:

- E-commerce Photography
- Commercial Photography
- Cultural Heritage Photography

This service is for initial orientation and is designed to save you time.

A bundle contains products that have proven to be particularly useful for other customers in this area of photography.

Please note that a bundle is not a kit. A kit contains a fixed number of articles and is sold as one product.

A bundle is a product selection for a specific application. A bundle is completely customisable as each product is treated separately. You can thus add or remove every product from the proposed bundle.

As soon as you are satisfied with a bundle proposal, add it to your 'request list' with one click. Quickly select your favourite broncolor partner in your region. That's it! Within a few days you will receive a non-binding offer for your customised product bundle.

Simple and practical, isn't it?

Feel free to start a conversation with us so we can better help you tailor your very own lighting solution:
digital@broncolor.swiss

Add to request list



Rent broncolor light around the world

As a long-standing partner of professionals in the image industry, we understand the needs of travelling photographers and assistants who operate in various locations worldwide. Access to reliable equipment is vital for their work.

With our rental service, "broncolor worldlight" we've got you covered. Rental equipment - whether complete systems or specialized light modifiers - is available through most of our distribution partners and many rental houses. In many cases, you can even rent a studio equipped with broncolor gear.

worldlight
RENT A SYSTEM BY **broncolor**

Look out for the "broncolor worldlight" logo - there you can expect:

- The opportunity to quickly and easily rent desired broncolor equipment
- Temporary expansion of your own equipment at short notice, ideal for complex shoots
- Access to special effect lamps and light modifiers for demanding light effects
- The chance to test broncolor equipment before making a purchase
- Always the latest and most cutting-edge lighting equipment

For the closest rental location near you, please visit the "broncolor near you" section on:
www.broncolor.swiss.



The broncolor System

POWER PACKS



Scoro 1600 S WiFi / RFS 2
31.046.XX
Scoro 3200 S WiFi / RFS 2
31.047.XX



Scoro 1600 E WiFi / RFS 2
31.066.XX
Scoro 3200 E WiFi / RFS 2
31.067.XX

HYBRID-POWER PACKS



Satos 3200
31.071.XX
Satos 1600
31.070.XX



Satos
charging
station
36.198.00

CONTINUOUS LIGHT



LED F160
61.010.00

LAMPS



Pulso L 1600 J
32.130.00
Pulso L 3200 J
32.131.00



Pulso G 1600 J
32.115.XX
Pulso G 3200 J
32.116.XX



Unilite 1600 J
32.113.XX
Unilite 3200 J
32.114.XX



Picolite
small lamp
32.021.XX

EFFECT LAMPS



Ringflash C
32.462.XX



Boxlite 40
32.341.XX



Litestick
32.451.00

REFLECTORS AND ATTACHMENTS



Pulso
wall adapter
36.900.00



Standard reflector P65
33.106.00
Standard reflector P70
33.107.00



Standard reflector L40
33.115.00



P-Travel reflector
33.103.00



PAR reflector
33.113.00



UV-
attachment
33.626.00



Power-
reflector for
Ringflash C
33.125.00



Beauty-
reflector for
Ringflash C
33.124.00



Soft-
reflector for
Ringflash C
33.123.00



Narrow angle reflector P45
33.104.00
Narrow angle reflector P50
for Pulso 8
33.105.00



Softlight reflector P
33.110.00



Beauty Dish
with textile diffuser
33.111.00



Wide angle
reflector P120
33.112.00



Background
reflector
33.114.00



Spot attachment
33.640.00



Conical snoot
33.120.00

SOFTBOXES / OCTABOXES / BEAUTYBOX



Softbox
33.560.00 35 x 60
33.561.00 60 x 60
33.562.00 60 x 100
33.563.00 100 x 100
33.564.00 30 x 120
33.565.00 90 x 120
33.566.00 120 x 180
33.567.00 30 x 180



Edge Mask for Softbox
33.612.00 35 x 60
33.613.00 60 x 100
33.614.00 90 x 120
33.615.00 120 x 180



Octabox
33.600.00 75
33.601.00 150



Beautybox
33.568.00 65

Adapter rings and tripods not included.
Various attachments available.

SURFACE VISUALIZER



Scope D50
82.110.XX
Scope D50 UV/IR
82.130.XX

STUDIO-MONOLIGHTS



Siros 400 S WiFi /
RFS 2
31.623.XX



Siros 800 S WiFi /
RFS 2
31.643.XX

Kits available.
Umbrella reflector included.

DUAL-MONOLIGHTS



Stelos
31.770.XX

Kits available.
Umbrella reflector included.

SPECIAL REFLECTORS



Litepipe P
32.452.00



Balloon
33.161.00



Picobox
33.128.00



broncolor Flooter
32.431.00

SPECIAL ACCESSORIES



RFS 2.1
transmitter
36.133.00



RFS 2.1
transmitter/
receiver kit
36.135.00



bronControl



bronAPI



RFS 2.1
receiver
36.134.00



Hot Shoe
Adapter 2 in 1
a6.137.00



DMX-adaptbox
for LED F160
64.010.00



RFS 3 transmitter
36.164.00 RFS 3 C (Canon)
36.165.00 RFS 3 N (Nikon)
36.166.00 RFS 3 S (Sony)
36.167.00 RFS 3 F (Fujifilm)
36.168.00 RFS 3 L (Leica)



Pulso adapter
for Picolite
33.501.00



Barn door
for P-Travel
33.243.00



Strip Grid 5:1 for
P70 reflector
33.195.00



Honeycomb grid for softlight
reflector P and
Beauty Dish
33.210.00



Diffuser filter
for softlight
reflector P and
Beauty Dish
33.310.00



Projection
attachment for
Picolite
33.641.00



Barn door with 4
wings
33.246.00 for P65,
P45 and PAR
33.247.00 for P70
33.119.00 for L40



Barn door with
4 wings for
Picolite
33.244.00



Honeycomb grids,
set of 3 pieces
33.219.00 for Ringflash C



Umbrella reflector
Ø 120 mm
(for LED F160 and
Pulso L)
33.170.00



Attachment with 3
honeycomb grids and 2
aperture masks for Picolite
33.204.00



Fresnel spot
attachment for
Picolite
33.631.00



Barn doors
with 2 wings for P70
33.227.00



Sunlite-Set
33.162.00



Honeycomb grids, set of 3 pieces
33.205.00 for P50
33.206.00 for P65, P45 and PAR
33.211.00 extremely narrow for P65,
P45 and PAR (1 pcs)
33.207.00 for P70
33.194.00 zu L40

PARA SYSTEM



Para 222 Kit
without adapter
33.552.03



Para 177 Kit
without adapter
33.551.03



Para 133 reflector
33.550.00
Para 133 HR reflector
33.550.04
Para 133 Kit without adapter
33.550.03
Para 133 HR Kit without
adapter
33.550.06



Para 88 reflector
33.482.00
Para 88 HR reflector
33.482.04
Para 88 Kit without adapter
33.483.03
Para 88 HR Kit without adapter
33.483.06

Honeycomb attachments and diffusers available.
Tripods and lamps not included.

UMBRELLAS



33.576.00 Focus 110 silver/black Ø 110 cm
33.496.00 Umbrella reflector
33.570.00 Silver/black Ø 105 cm
33.571.00 White/black Ø 105 cm
33.572.00 Transparent Ø 105 cm
33.573.00 White/black Ø 85 cm
33.574.00 Silver/black Ø 85 cm
33.575.00 Transparent Ø 85 cm

For more than 65 years broncolor has been shaping the world of commercial photography with professional flash and continuous lighting solutions. The power packs and monolights as well as the most extensive range of light shapers can be found in the most renowned studios all over the world. The decades of reliability – equivalent to investment protection – as well as the convenience of operation and outstanding performance data secure broncolor a firm place in the cosmos of premium products.

broncolor is aware of its commitment to the highest quality and therefore maintains its own development and production facilities in Switzerland. Visitors can convince themselves of the craftsmanship and the high production depth during a factory tour (organisation via the local broncolor partner).

The support of broncolor users is ensured by a network of long-standing and authorised partners in more than 60 countries. The broncolor partner network is always on hand to provide support, both for consulting and after-sales service.



Bron Elektronik AG
CH-4123 Allschwil / Switzerland
www.broncolor.swiss