

broncolor

cultural heritage



Lighting solutions for cultural heritage photography

broncolor is dedicated to providing lighting solutions for the most demanding applications such as cultural heritage or scientific photography where colour reproduction and consistency are of utmost importance.

The challenge of consistently meeting your needs and repeatedly surprising you with innovations is our motivation – and light our passion. Essentially, we have much in common. Every day and with every new assignment you are challenged to provide visual reproduction of art objects or archaeological discoveries - we want to offer you our full support.



Constant and accurate light quality

The highest colour consistency through broncolor's patented Enhanced Colour Temperature Control (ECTC).



Reproducibility

Achieve the same results independent of timing or location thanks to durability and consistency regarding power output and colour.

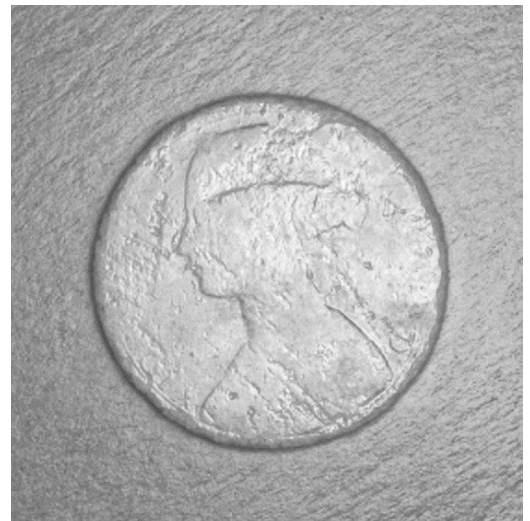


The most complete lighting system

From battery to studio and the widest range of light shapers including dedicated equipment for scientific photography such as UV attachments or multi spectral surface visualizers offered by one manufacturer.



Standard photography



Gloss-enhanced RTI model

This brochure provides an overview of products commonly used in cultural heritage applications. For our full portfolio please visit broncolor.swiss or see one of our global partners.

broncolor Scope D50



The portable Reflectance Transformation Imaging (RTI) solution makes even the smallest surface detail interactively visible.

The object is illuminated from 48 different angles and the software creates a two-dimensional surface model to authentically reproduce the shape, colour and texture of the surface. Optionally in the visual, ultraviolet or infrared spectral range.



broncolor Siros



Monolight for studio and on-location photography. Siros is the high quality, flexible light solution for professionals.

Enough power to face any challenge, control range of 9 f-stops, extremely fast flash duration, a vast amount of functions while maintaining absolute colour constancy – all in one compact and sturdy housing.



broncolor UV attachment



The UV attachment lets details become visible that our eyes can't normally see. It eliminates practically the entire visible light of the flash and enables unlimited applications in technical photography.

The UV attachment is compatible with broncolor power pack and monolight solutions.



broncolor Satos



Satos is the latest power pack that offers unparalleled control over your lighting setup. With features such as asymmetrical power distribution, colour temperature control, bicolour modeling light, and high-speed sync (HSS), Satos allows for precise and customizable lighting for even the most complex projects.

On both versions, 3200 J and 1600 J, you can control your lights on three channels and with the Dual Power Management it ensures that the necessary power is provided at the right moment, whether in the studio or on-location.



broncolor Pulso L



The Pulso L lamp is the perfect sparring partner for Satos and enables the highest level of operating convenience through bidirectional communication between the lamp and power pack.

All regular settings can be made on the lamp and are synchronized with the system in real time. The UE experts involved in the project placed the greatest emphasis on increasing the everyday usability of a certain function or feature, such as operating the lamp in flash, continuous or mixed mode as well as communication link between all active components in the system.





Testimonials



As a department of Archaeology and Conservation, we research and record heritage objects from the moment of excavation through typological identification, condition assessment, conservation treatment and beyond. In addition to revealing previously hidden surface details, the broncolor Scope D50 offers us the control and reproducibility in lighting our images that we need to document changes in objects over time. We are harnessing the abilities of the Scope D50 as a teaching aid and a powerful research tool and we have only scratched the surface of its applications to our work.

Dr Nicola Emmerson, Reader in Conservation, School of History,
Archaeology and Religion Cardiff University



The choice of broncolor lighting was the easiest decision I had to make as Chief Photographer at the Victoria & Albert Museum, London. The V&A's large and complex collection comprises intricately detailed textiles, the smoothest sculptured marble, dazzling jewels and shining metalwork and ceramics. These present many challenges for the in-house studio photographers. broncolor lighting and light shapers create the cleanest and most consistent image quality we have produced throughout our 150-year history. The simplicity of operation with multi-functionality appreciated by everyone whether used in a ceiling-track system or on studio stands. Its reliability is second to none being well designed, robust and perhaps most importantly its compatibility across the whole product range.

Ken Jackson, Formerly Chief Photographer, Victoria & Albert
Museum, Co-Director of Cultural Heritage Digitisation Limited





broncolor scope D50
powered by TRUVIS

The broncolor System

POWER PACKS



Scoro 1600 S WiFi / RFS 2
31.046.XX
Scoro 3200 S WiFi / RFS 2
31.047.XX



Scoro 1600 E WiFi / RFS 2
31.066.XX
Scoro 3200 E WiFi / RFS 2
31.067.XX

HYBRID-POWER PACKS



Sator 3200
31.071.XX
Sator 1600
31.070.XX

BATTERY POWER PACK



Move 1200 L RFS 2
31.016.XX

Kits available.

CONTINUOUS LIGHT

LED F160
61.010.00

LAMPS



Pulso L 1600 J
32.130.00
Pulso L 3200 J
32.131.00



Pulso G 1600 J
32.115.XX
Pulso G 3200 J
32.116.XX



Unitite 1600 J
32.113.XX
Unitite 3200 J
32.114.XX



Picolite
small lamp
32.021.XX



MobiLED
32.013.00

Reflectors only included with MobiLED

EFFECT LAMPS



Ringflash C
32.462.XX



Boxlite 40
32.341.XX



Litestick
32.451.00

REFLECTORS AND ATTACHMENTS



Pulso
wall adapter
36.900.00



Standard reflector P65
33.106.00
Standard reflector P70
33.107.00



Standard reflector L40
33.115.00



P-Travel reflector
33.103.00



PAR reflector
33.113.00



UV-attachment
33.626.00



Power-
reflector for
Ringflash C
33.125.00



Beauty-
reflector for
Ringflash C
33.124.00



Soft-
reflector for
Ringflash C
33.123.00



Narrow angle reflector P45
33.104.00
Narrow angle reflector P50
for Pulso 8
33.105.00



Softlight reflector P
33.110.00



Beauty Dish
with textile diffuser
33.111.00



Wide angle
reflector P120
33.112.00



Background
reflector
33.114.00



Spot attachment
33.640.00



Conical snoot
33.120.00

SOFTBOXES / OCTABOXES / BEAUTYBOX



Softbox
33.560.00 35 x 60
33.561.00 60 x 60
33.562.00 60 x 100
33.563.00 100 x 100
33.564.00 30 x 120
33.565.00 90 x 120
33.566.00 120 x 180
33.567.00 30 x 180



Edge Mask for Softbox
33.612.00 35 x 60
33.613.00 60 x 100
33.614.00 90 x 120
33.615.00 120 x 180



Octabox
33.600.00 75
33.601.00 150



Beautybox
33.568.00 65

Adaptor rings and tripods not included.
Various attachments available.

SURFACE VISUALIZER



Scope D50
82.110.XX
Scope D50 UV/IR
82.130.XX

STUDIO-MONOLIGHTS



Siros 400 S WiFi /
RFS 2
31.623.XX



Siros 800 S WiFi /
RFS 2
31.643.XX

Kits available.
Umbrella reflector included.

BATTERY-MONOLIGHTS



Siros 400 L WiFi /
RFS 2
31.710.XX



Siros 800 L WiFi /
RFS 2
31.720.XX

Kits available.
Umbrella reflector included.

SPECIAL REFLECTORS



Litepipe P
32.452.00



Balloon
33.161.00



Picobox
33.128.00



broncolor Flector
32.431.00

SPECIAL ACCESSORIES



RFS 2.1 transmitter
36.133.00



RFS 2.1 transmitter/
receiver kit
36.135.00



bronControl



bronAPI



RFS 2.1 receiver
36.134.00



Hot Shoe Adapter 2 in 1
a6.137.00



DMX-adapterbox
for LED F160
64.010.00



RFS 2.2 transmitter
36.160.00 Canon
36.161.00 Nikon
36.162.00 Sony
36.163.00 Fuji



Pulso adapter
for Picolite
33.501.00



Barn door
for P-Travel
33.243.00



Strip Grid 5:1 for
P70 reflector
33.195.00



Honeycomb
grid for softlight
reflector P and
Beauty Dish
33.210.00



Diffuser filter
for softlight
reflector P and
Beauty Dish
33.310.00



Projection
attachment for
Picolite
33.641.00



Barn door with 4
wings
33.246.00 for P65,
P45 and PAR
33.247.00 for P70
33.119.00 for L40



Barn door with
4 wings for
Picolite
33.244.00



Honeycomb grids,
set of 3 pieces
33.219.00 for Ringflash C



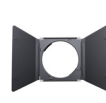
Umbrella reflector
Ø 120 mm
[for LED F160 and
Pulso L]
33.170.00



Attachment with 3
honeycomb grids and 2
aperture masks for Picolite
33.204.00



Fresnel spot
attachment for
Picolite
33.631.00



Barn doors
with 2 wings for P70
33.227.00



Sunlite-Set
33.162.00



Honeycomb grids, set of 3 pieces
33.205.00 for P50
33.206.00 for P65, P45 and PAR
33.211.00 extremely narrow for P65,
P45 and PAR (1 pcs)
33.207.00 for P70
33.194.00 zu L40

PARA SYSTEM



Para 222 Kit
without adapter
33.552.03



Para 177 Kit
without adapter
33.551.03



Para 133 reflector
33.550.00
Para 133 HR reflector
33.550.04
Para 133 Kit without adapter
33.550.03
Para 133 HR Kit without
adapter
33.550.06



Para 88 reflector
33.482.00
Para 88 HR reflector
33.482.04
Para 88 Kit without adapter
33.483.03
Para 88 HR Kit without adapter
33.483.06

Honeycomb attachments and diffusers available.
Tripods and lamps not included.

UMBRELLAS



33.576.00 Focus 110 silver/black Ø 110 cm
33.496.00 Umbrella reflector
33.570.00 Silver/black Ø 105 cm
33.571.00 White/black Ø 105 cm
33.572.00 Transparent Ø 105 cm
33.573.00 White/black Ø 85 cm
33.574.00 Silver/black Ø 85 cm
33.575.00 Transparent Ø 85 cm

About broncolor

Shaping the world of commercial photography for more than 60 years, Bron Elektronik manufactures professional flash and continuous light solutions for photography and videography under its legendary brand broncolor. Known for premium products with best operating convenience, long-term value and reliability, professionals in the field of cultural heritage, commercial photography, eCommerce as well as forensic science trust broncolor for their demanding lighting needs. The power pack and monolight solutions together with the extensive range of high-quality light modifiers and the iconic broncolor Para reflectors are an integral part of many prestigious studios across the globe. broncolor is committed to its heritage and maintains the development and production facilities in the heart of Europe - Switzerland.



Bron Elektronik AG
CH-4123 Allschwil / Switzerland
www.broncolor.swiss