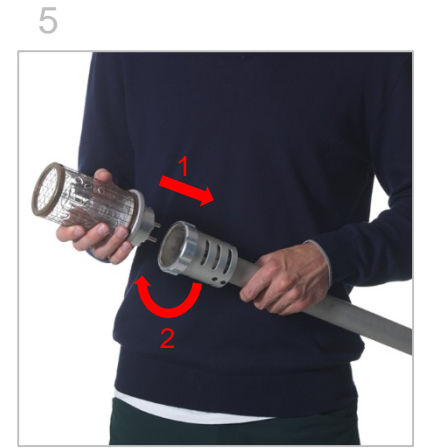
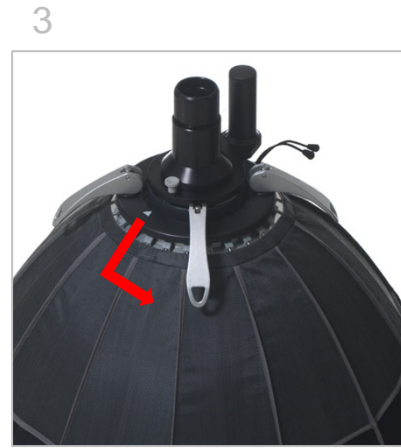
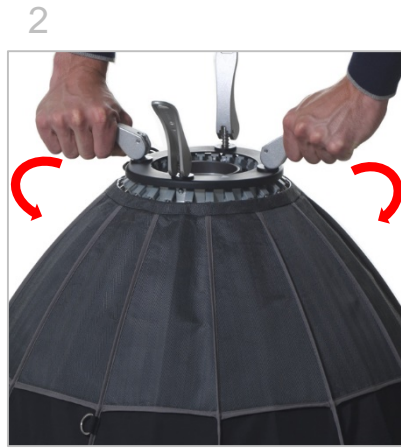
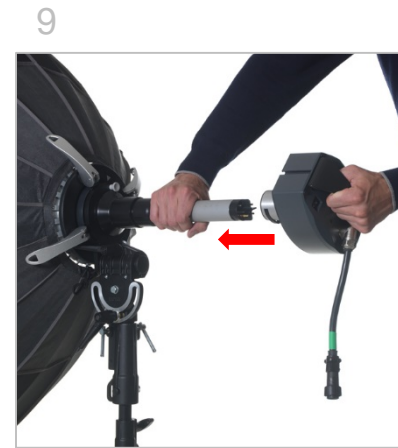
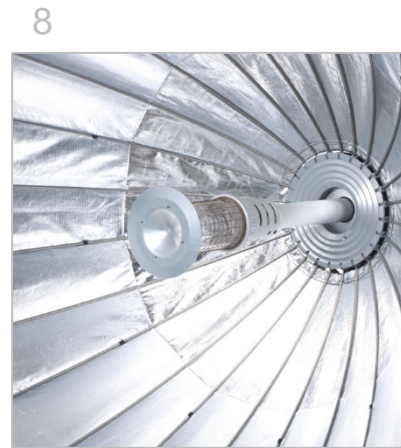


Mounting instructions for Para 88 / 133 FT

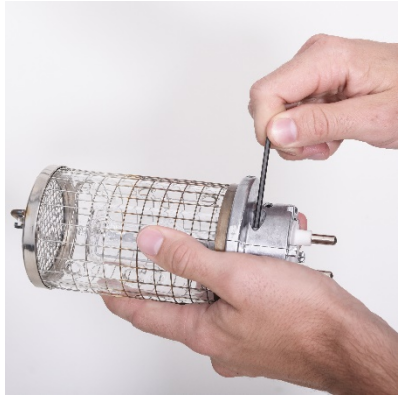


1. Insert lamp module into focusing rod.
2. Rotate locking ring clockwise to secure lamp module.

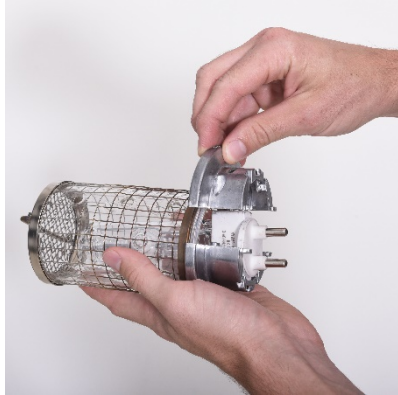


Mounting instructions for Para 88 / 133 FT

1



2



3



4



Changing the Bulb

1



2



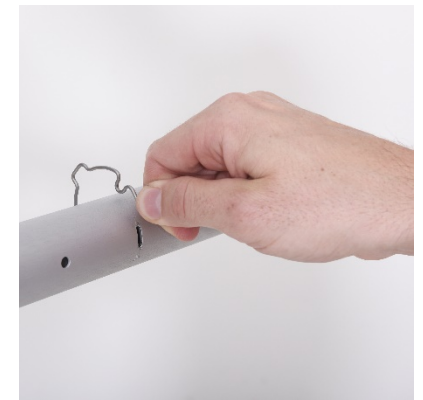
Transport restraint for lamp

Bron Elektronik AG
CH-4123 Allschwil
Schweiz (Switzerland)

1



2



Stop clip for diffusers and light grids

MA012.03